

3 point match (game 1)
 ○ mikegrahamjr (0 points)

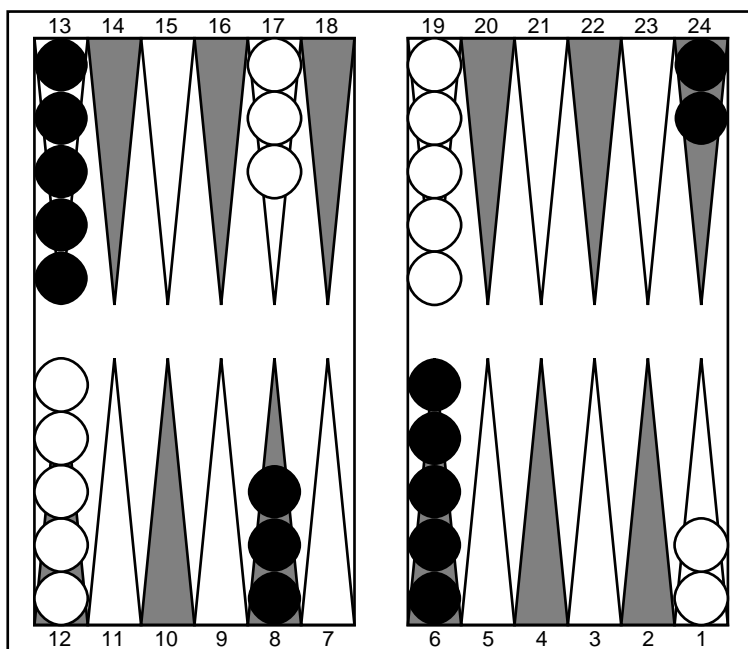
● You (0 points)

Match Information

mikegrahamjr's rating: n/a
 You's rating: n/a
 Date: n/a
 Event: n/a
 Round: n/a
 Place: n/a
 Annotator: n/a
 Comments: n/a

Move number 1: You to play 65

64

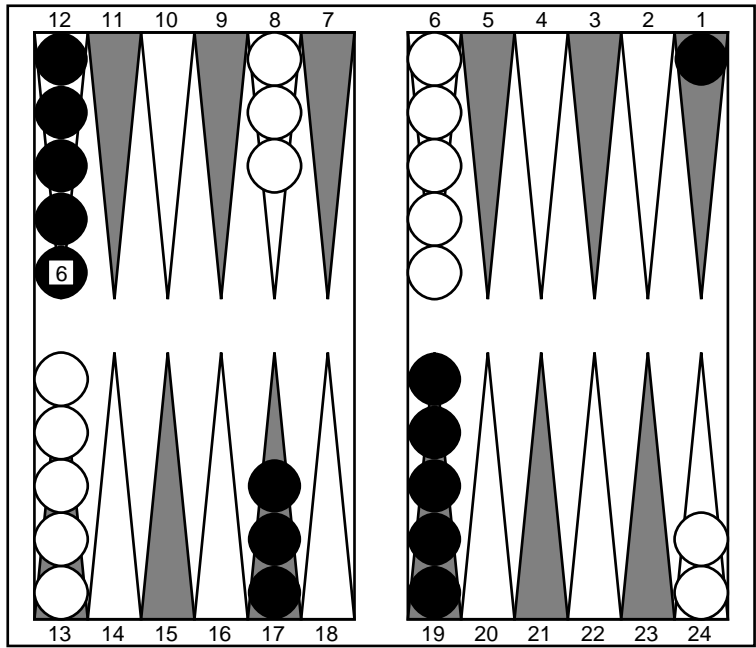


Position ID: 4HPwATDgc/ABMA Match ID: cAh3AAAAAAAAA
 Pip counts: mikegrahamjr 167, You 167
 ● 65: 24/13

* 1. Cubeful 2-ply 24/13 Eq.: +0.118
 0.533 0.121 0.004 - 0.467 0.120 0.003

Move number 2: mikegrahamjr to play 55

64



Position ID: 4HPwATDgc/ADIA Match ID: MIF2AAAAAAAA
 Pip counts: mikegrahamjr 167, You 156

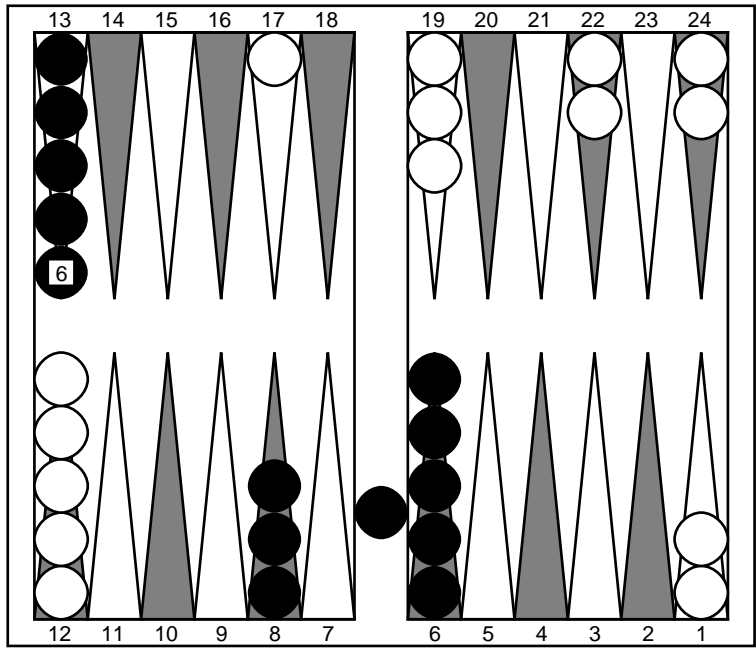
Cube analysis
 2-ply cubeless equity -0.073 (Money: -0.070)
 0.467 0.120 0.003 - 0.533 0.121 0.004
 Cubeful equities:
 1. No double -0.118
 2. Double, pass +1.000 (+1.118)
 3. Double, take -0.646 (-0.529)
 Proper cube action: No double, take (32.1%)

○ 55+: 8/3(2) 6/1*(2)

* 1. Cubeful 2-ply 8/3(2) 6/1*(2) Eq.: +0.268
 0.536 0.212 0.004 - 0.464 0.101 0.003

Move number 3: You to play 62

64



Position ID: M07wATDgc/ADQA Match ID: cAlrAAAAAAAAA
 Pip counts: mikegrahamjr 147, You 157

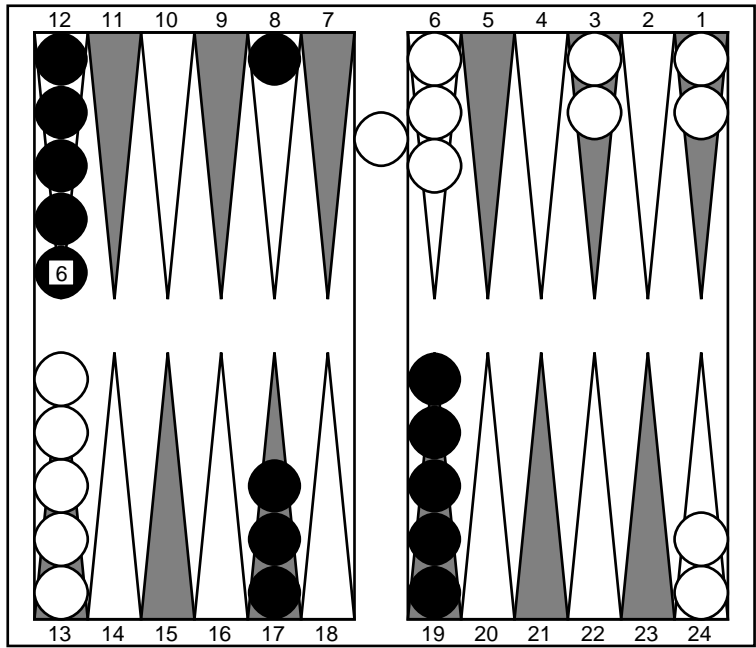
Cube analysis
 2-ply cubeless equity -0.243 (Money: -0.185)
 0.464 0.101 0.003 - 0.536 0.212 0.004
 Cubeful equities:
 1. No double -0.268
 2. Double, pass +1.000 (+1.268)
 3. Double, take -0.776 (-0.508)
 Proper cube action: No double, take (28.6%)

● 62+: bar/17*

* 1. Cubeful 0-ply bar/17* Eq.: +0.224
 0.567 0.124 0.007 - 0.433 0.134 0.003

Move number 4: mikegrahamjr to play 54

64



Position ID: Mw74AFjgc/BDAA Match ID: MIFyAAAAAAAAA
 Pip counts: mikegrahamjr 164, You 149

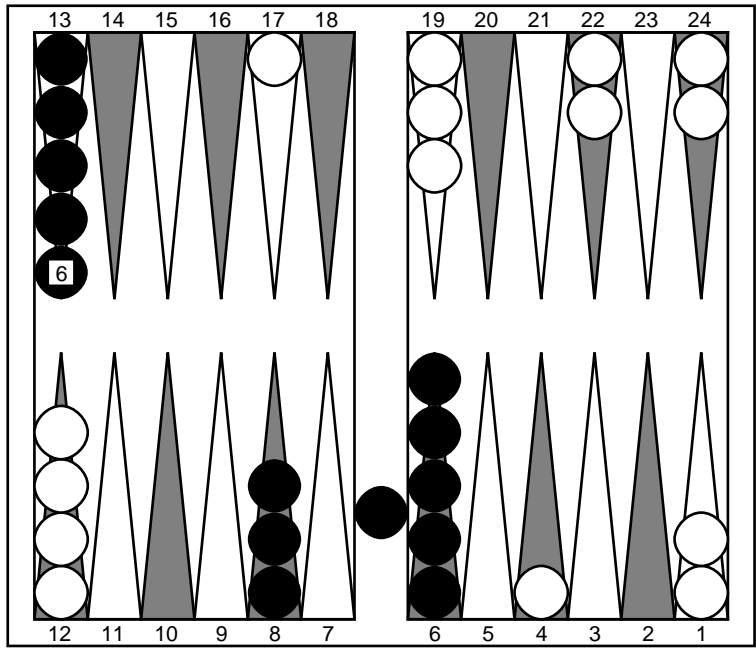
Cube analysis
 2-ply cubeless equity -0.123 (Money: -0.125)
 0.431 0.140 0.003 - 0.569 0.123 0.007
 Cubeful equities:
 1. No double -0.221
 2. Double, pass +1.000 (+1.221)
 3. Double, take -0.840 (-0.619)
 Proper cube action: No double, take (33.6%)

○ 54+: bar/21 13/8*

* 1. Cubeful 0-ply bar/21 13/8* Eq.: +0.149
 0.513 0.204 0.004 - 0.487 0.114 0.005

Move number 5: You to play 26

64



Position ID: M07wADHgc/ADQA Match ID: cA15AAAAAAAA
 Pip counts: mikegrahamjr 155, You 157

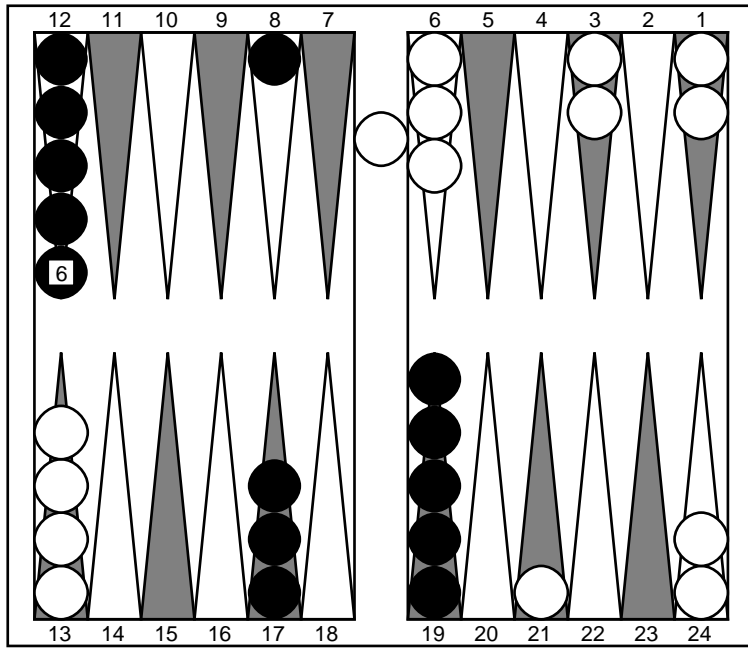
Cube analysis
 2-ply cubeless equity -0.170 (Money: -0.122)
 0.486 0.112 0.005 - 0.514 0.206 0.005
 Cubeful equities:
 1. No double -0.155
 2. Double, pass +1.000 (+1.155)
 3. Double, take -0.605 (-0.449)
 Proper cube action: No double, take (28.0%)

● 26+: bar/17*

* 1. Cubeful 0-ply bar/17* Eq.: +0.309
 0.581 0.145 0.010 - 0.419 0.130 0.003

Move number 6: mikegrahamjr to play 44

64



Position ID: Mw54gFjgc/BDAA Match ID: MAFyAAAAAAAAA
 Pip counts: mikegrahamjr 172, You 149

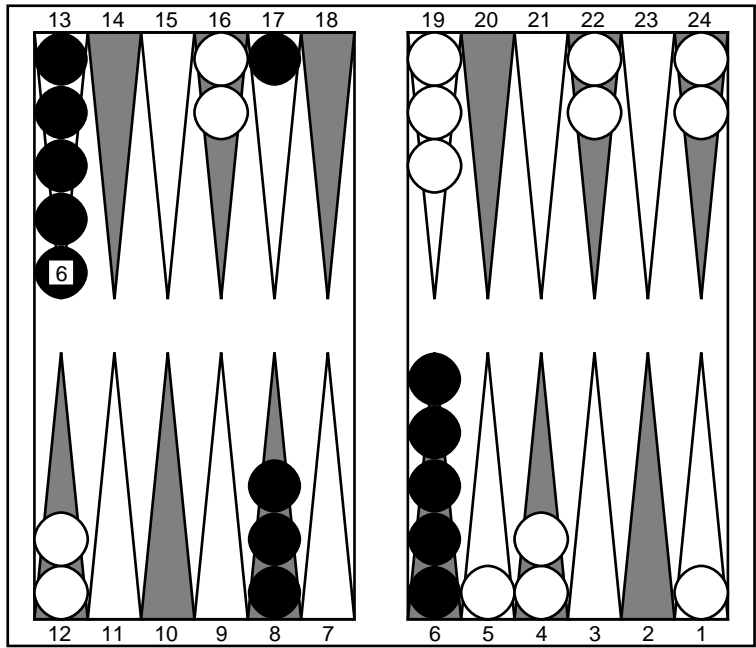
Cube analysis
 2-ply cubeless equity -0.191 (Money: -0.176)
 0.421 0.136 0.003 - 0.579 0.147 0.010
 Cubeful equities:
 1. No double -0.295
 2. Double, pass +1.000 (+1.295)
 3. Double, take -0.934 (-0.639)
 Proper cube action: No double, take (33.1%)

○ 44: bar/21 24/20 13/9(2)

* 1. Cubeful 2-ply bar/21 24/20 13/9(2) Eq.: -0.070
 0.462 0.155 0.002 - 0.538 0.100 0.002

Move number 7: You to play 11

64



Position ID: M45hQCPgc/BDAA Match ID: cIlkAAAAAAAAA
 Pip counts: mikegrahamjr 156, You 149

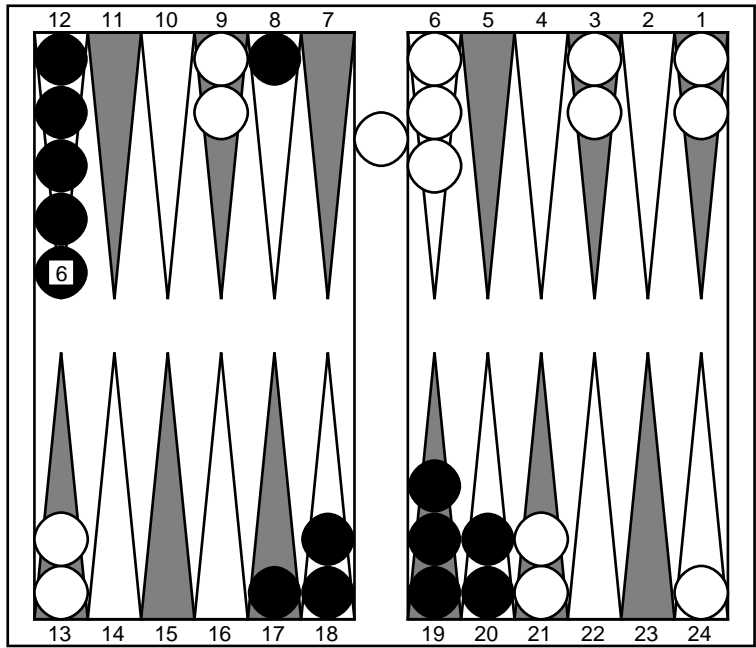
Cube analysis
 2-ply cubeless equity -0.009 (Money: +0.019)
 0.538 0.100 0.002 - 0.462 0.155 0.002
 Cubeful equities:
 1. No double +0.070
 2. Double, pass +1.000 (+0.930)
 3. Double, take -0.260 (-0.330)
 Proper cube action: No double, take (26.2%)

● 11+: 8/7(2) 6/5*(2)?!

- 1. Cubeful 2-ply 8/5* 6/5 Eq.: +0.508
 0.631 0.151 0.007 - 0.369 0.123 0.002
- * 2. Cubeful 2-ply 8/7(2) 6/5*(2) Eq.: +0.434 (-0.074)
 0.614 0.156 0.008 - 0.386 0.156 0.003

Move number 8: mikegrahamjr to play 52

64



Position ID: M45hgFGwW/BDAA Match ID: MIFqAAAAAAAAA
 Pip counts: mikegrahamjr 161, You 145

Cube analysis
 2-ply cubeless equity -0.238 (Money: -0.232)
 0.386 0.156 0.003 - 0.614 0.156 0.008
 Cubeful equities:
 1. No double -0.434
 2. Double, pass +1.000 (+1.434)
 3. Double, take -1.191 (-0.757)
 Proper cube action: No double, take (34.5%)

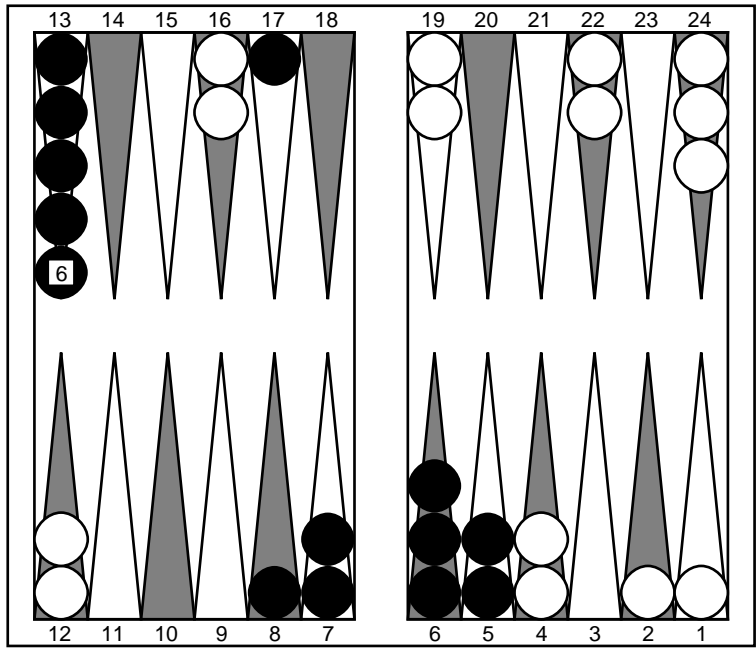
○ 52: bar/23 6/1??

- 1. Cubeful 2-ply bar/23 13/8* Eq.: -0.426
 0.391 0.167 0.004 - 0.609 0.181 0.007
- * 2. Cubeful 2-ply bar/23 6/1 Eq.: -1.000 (-0.574)
 0.269 0.052 0.000 - 0.731 0.173 0.004

Move number 9:

You to play 32

64



Position ID: Z4xhgCmwW/BDAA Match ID: cIlpAAAAAAAAA
 Pip counts: mikegrahamjr 154, You 145

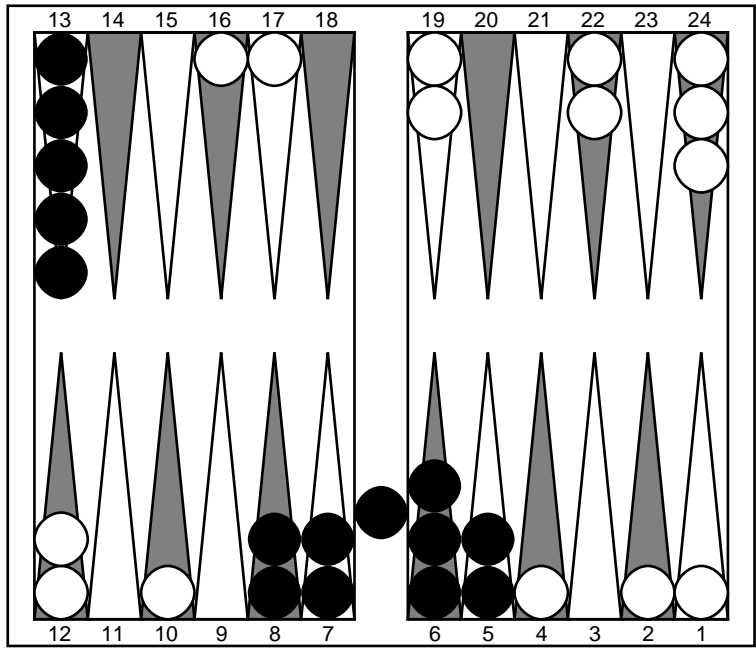
Cube analysis
 2-ply cubeless equity +0.655 (Money: +0.587)
 0.731 0.173 0.004 - 0.269 0.052 0.000
 Cubeful equities:
 1. Double, pass +1.000
 2. Double, take +1.210 (+0.210)
 3. No double +0.935 (-0.065)
 Proper cube action: Double, pass

● 32: 13/8

* 1. Cubeful 0-ply 13/8 Eq.: +0.948
 0.747 0.207 0.008 - 0.253 0.071 0.001

Move number 11: You to play 65

64



Position ID: Z0xhAimw2+ADQA Match ID: cAl3AAAAAAAAA
 Pip counts: mikegrahamjr 147, You 148

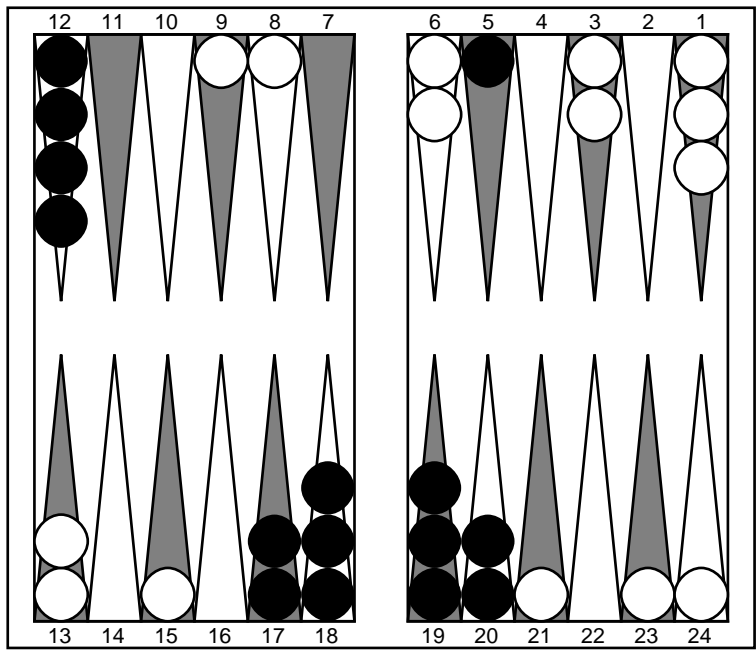
Cube analysis
 2-ply cubeless equity +0.869 (Money: +0.734)
 0.754 0.267 0.019 - 0.246 0.059 0.001
 Cubeful equities:
 1. No double +1.091
 2. Double, take +1.571 (+0.480)
 3. Double, pass +1.000 (-0.091)
 Proper cube action: Too good to double, pass (16.0%)

● 65: bar/20 13/7

* 1. Cubeful 2-ply bar/20 13/7 Eq.: +1.044
 0.762 0.252 0.013 - 0.238 0.063 0.001

Move number 12: mikegrahamjr to play 14

64



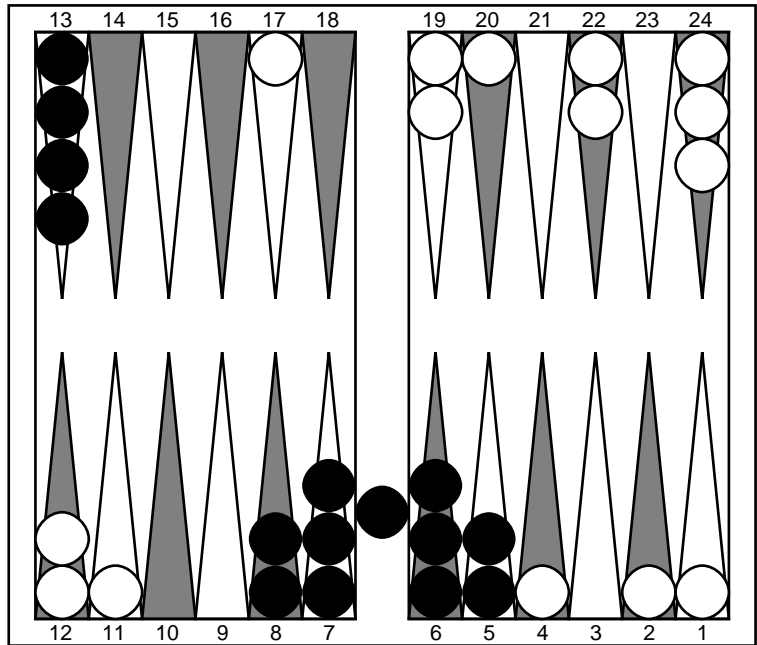
Position ID: Z0xhAimwu8EDAg Match ID: MIFwAAAAAAAAA
 Pip counts: mikegrahamjr 147, You 137

Cube analysis
 2-ply cubeless equity -0.843 (Money: -0.726)
 0.238 0.063 0.001 - 0.762 0.252 0.013
 Cubeful equities:
 1. No double -1.044
 2. Double, pass +1.000 (+2.044)
 3. Double, take -2.450 (-1.406)
 Proper cube action: No double, take (40.8%)

○ 14: 15/14 9/5*?!

- 1. Cubeful 2-ply 23/22 9/5* Eq.: -1.181
 0.225 0.052 0.000 - 0.775 0.321 0.031
- 2. Cubeful 2-ply 24/23 9/5* Eq.: -1.184 (-0.003)
 0.206 0.045 0.000 - 0.794 0.302 0.017
- 3. Cubeful 2-ply 15/11 9/8 Eq.: -1.185 (-0.004)
 0.194 0.040 0.000 - 0.806 0.292 0.017
- 4. Cubeful 2-ply 9/5*/4 Eq.: -1.198 (-0.017)
 0.214 0.046 0.000 - 0.786 0.313 0.027
- 5. Cubeful 2-ply 9/5* 6/5 Eq.: -1.212 (-0.031)
 0.215 0.048 0.000 - 0.785 0.329 0.029
- * 8. Cubeful 2-ply 15/14 9/5* Eq.: -1.235 (-0.053)
 0.208 0.045 0.000 - 0.792 0.330 0.031

64

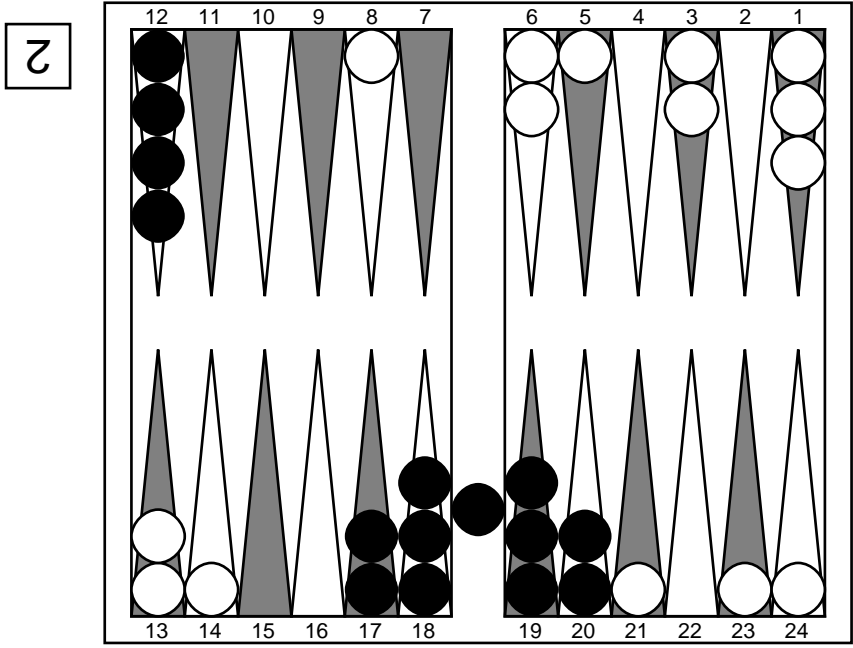


Position ID: Z5pgASmwu8EDQA Match ID: cAlgAAAAAAAAA
Pip counts: mikegrahamjr 142, You 142

Cube analysis
2-ply cubeless equity +1.092 (Money: +0.899)
0.792 0.330 0.031 - 0.208 0.045 0.000
Cubeless equities:
1. No double +1.235
2. Double, take +1.976 (+0.741)
3. Double, pass +1.000 (-0.235)
Proper cube action: Too good to double, pass (24.1%)

- Double??
- Take??
- 33-:

Move number 16: mikegrahamjr to play 65



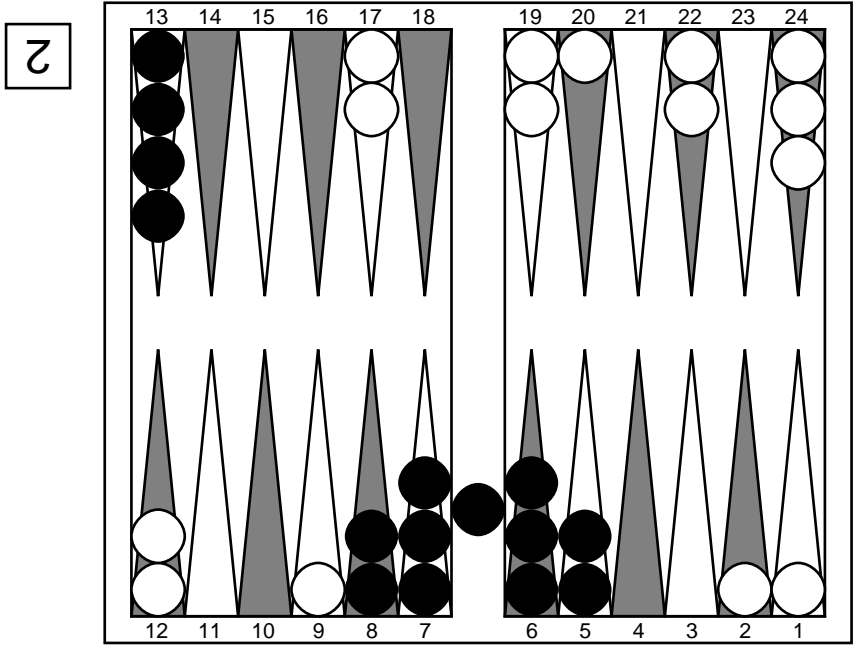
Position ID: Z5pgASmwu8EDQA Match ID: AQF3AAAAAAAAA
 Pip counts: mikegrahamjr 142, You 142

Cube analysis
 2-ply cubeless equity -0.531 (Money: -0.544)
 0.298 0.101 0.001 - 0.702 0.230 0.013
 Cubeful equities:
 1. No double -0.444
 2. Double, pass +1.000 (+1.444)
 3. Double, take -0.804 (-0.360)
 Proper cube action: No redouble, take (19.9%)

○ 65: 21/16 14/8

* 1. Cubeful 2-ply 21/16 14/8 Eq.: -0.616
 0.249 0.070 0.001 - 0.751 0.268 0.015

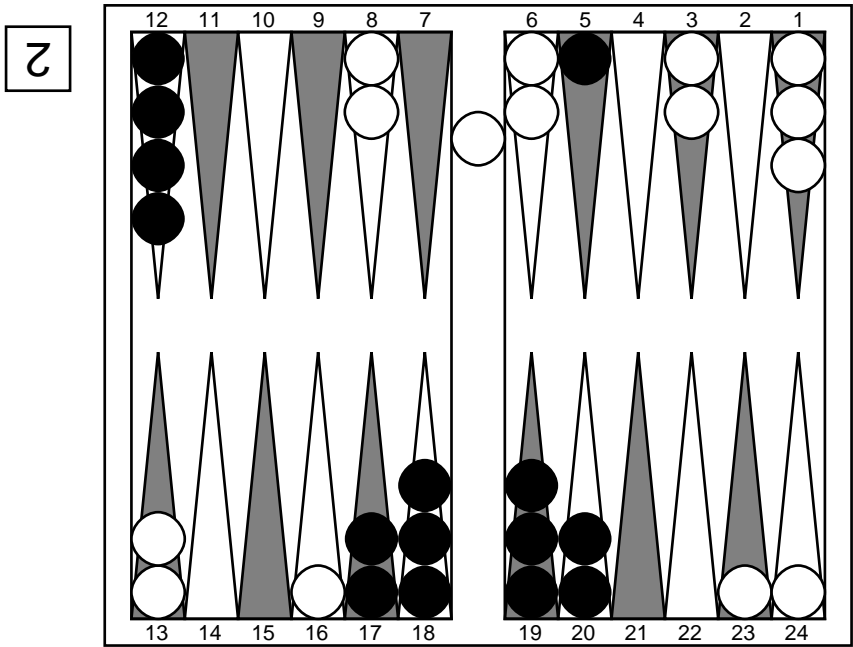
Move number 17: You to play 23



Position ID: Z5rBCCiwu8EDQA Match ID: QQtAAAAAAAAA
 Pip counts: mikegrahamjr 131, You 142
 ● 23: bar/20*

* 1. Cubeful 0-ply bar/20* Eq.: +0.789
 0.802 0.307 0.020 - 0.198 0.046 0.000

Move number 18: mikegrahamjr to play 65



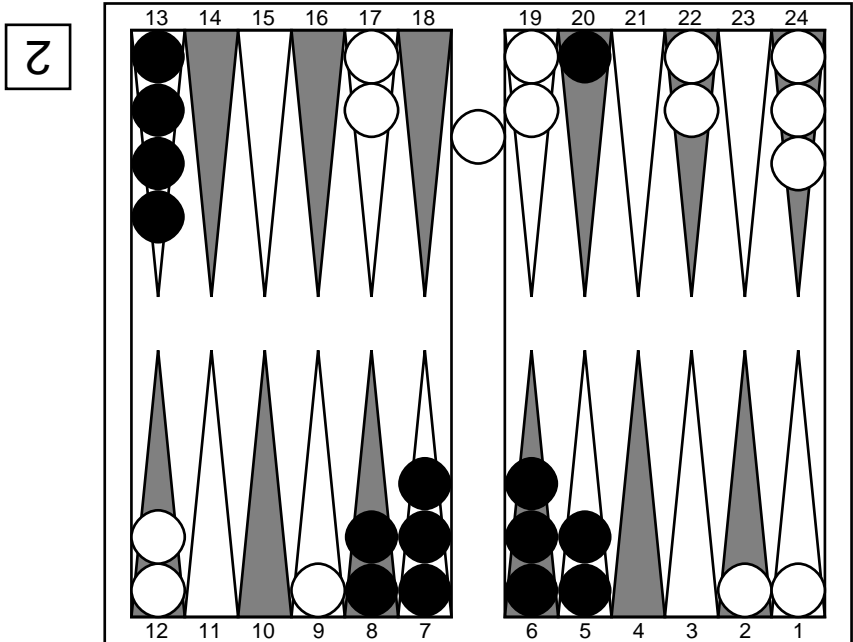
Position ID: Z8xgBFswu8EDAg Match ID: AQF3AAAAAAAAA
 Pip counts: mikegrahamjr 151, You 137

Cube analysis
 2-ply cubeless equity -0.842 (Money: -0.859)

0.198 0.046 0.001 - 0.802 0.285 0.016
 Cubeful equities:
 1. No double -0.769
 2. Double, pass +1.000 (+1.769)
 3. Double, take -1.206 (-0.437)
 Proper cube action: No redouble, take (19.8%)

○ 65:

Move number 19: You to play 15

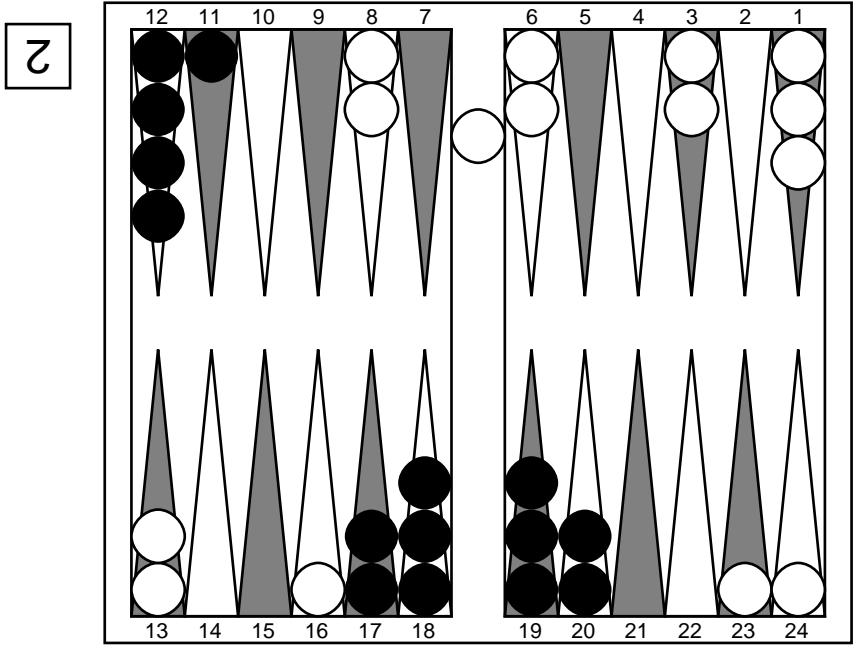


Position ID: Z8xgBFSwu8EDAg Match ID: QYl0AAAAA
 Pip counts: mikegrahamjr 151, You 137

● 15: 20/14?!

- | | | | | |
|----|---------------|---------------------------------------|------|------------------|
| 1. | Cubeful 2-ply | 13/8 6/5 | Eq.: | +0.837 |
| | | 0.822 0.300 0.016 - 0.178 0.035 0.000 | | |
| 2. | Cubeful 2-ply | 13/8 7/6 | Eq.: | +0.807 (-0.030) |
| | | 0.812 0.296 0.017 - 0.188 0.038 0.000 | | |
| 3. | Cubeful 2-ply | 13/7 | Eq.: | +0.803 (-0.034) |
| | | 0.812 0.291 0.015 - 0.188 0.038 0.000 | | |
| 4. | Cubeful 2-ply | 20/15 6/5 | Eq.: | +0.781 (-0.056) |
| | | 0.813 0.268 0.014 - 0.187 0.040 0.000 | | |
| * | 5. | Cubeful 2-ply | Eq.: | +0.767 (-0.070) |
| | | 20/14 | | |
| | | 0.809 0.265 0.015 - 0.191 0.043 0.000 | | |

Move number 20: mikegrahamjr to play 52



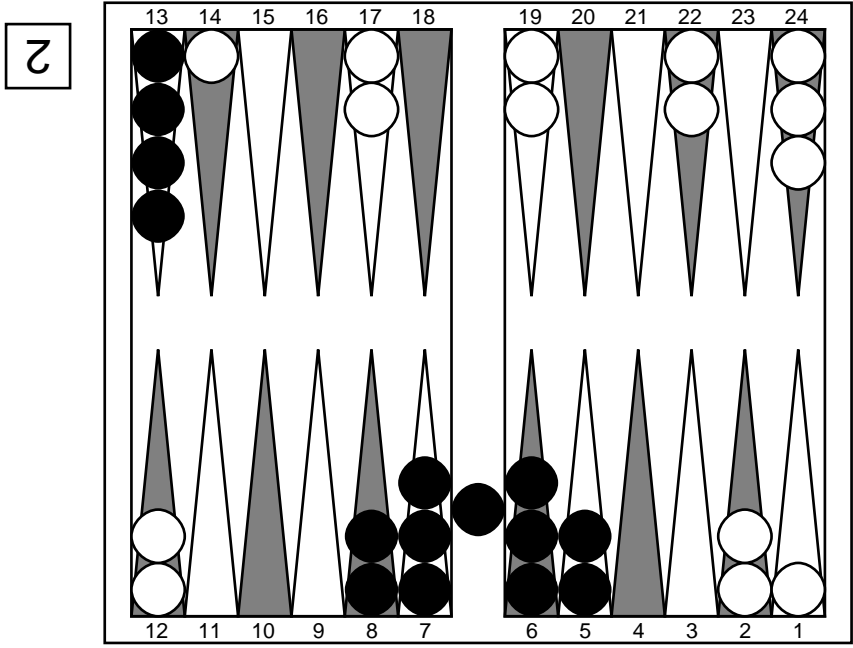
Position ID: Z8xgBFSwu8ELAA Match ID: AYFqAAAAAAAAA
 Pip counts: mikegrahamjr 151, You 131

Cube analysis
 2-ply cubeless equity -0.838 (Money: -0.854)
 0.191 0.043 0.000 - 0.809 0.265 0.015
 Cubeful equities:
 1. No double -0.767
 2. Double, pass +1.000 (+1.767)
 3. Double, take -1.230 (-0.463)
 Proper cube action: No redouble, take (20.8%)

○ 52: bar/23 16/11*

* 1. Cubeful 0-ply bar/23 16/11* Eq.: -0.690
 0.209 0.052 0.000 - 0.791 0.234 0.007

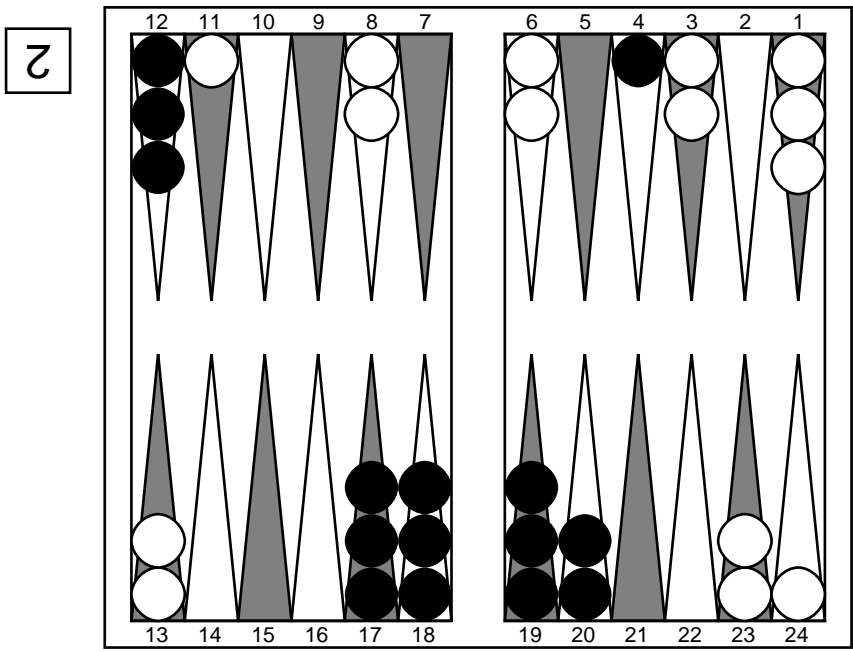
Move number 21: You to play 45



Position ID: Z8zIACywu8EDQA Match ID: QQ12AAAAAAAA
 Pip counts: mikegrahamjr 144, You 142
 ● 45: bar/21 13/8

* 1. Cubeful 2-ply bar/21 13/8 Eq.: +0.778
 0.818 0.250 0.010 - 0.182 0.041 0.000

Move number 22: mikegrahamjr to play 13



Position ID: Z8zIACywu4MDBA Match ID: AYFsAAAAAAAA
 Pip counts: mikegrahamjr 144, You 133

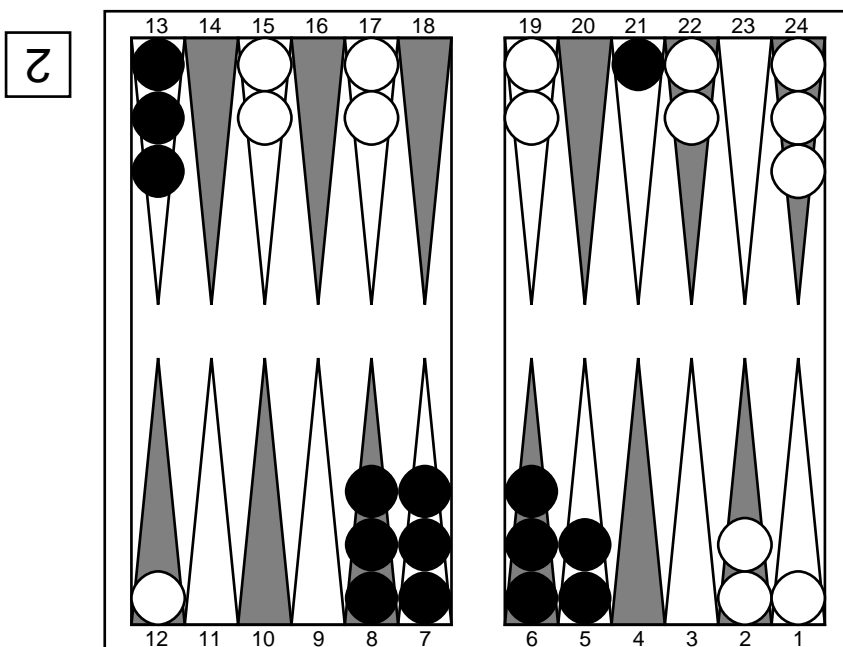
Cube analysis
 2-ply cubeless equity -0.844 (Money: -0.856)

0.182 0.041 0.000 - 0.818 0.250 0.010
 Cubeful equities:
 1. No double -0.778
 2. Double, pass +1.000 (+1.778)
 3. Double, take -1.269 (-0.491)
 Proper cube action: No redouble, take (21.6%)

○ 13: 13/10 11/10?

- | | | | | | |
|----|---------------|---------------------------------------|-------------|-----------------|-----------------|
| 1. | Cubeful 2-ply | 24/21 23/22 | Eq.: | -0.770 | |
| | | 0.198 0.037 0.000 - 0.802 0.282 0.015 | | | |
| 2. | Cubeful 2-ply | 23/22 11/8 | Eq.: | -0.794 (-0.024) | |
| | | 0.183 0.032 0.000 - 0.817 0.267 0.011 | | | |
| 3. | Cubeful 2-ply | 24/21 11/10 | Eq.: | -0.812 (-0.043) | |
| | | 0.171 0.031 0.000 - 0.829 0.254 0.008 | | | |
| 4. | Cubeful 2-ply | 8/4* | Eq.: | -0.852 (-0.082) | |
| | | 0.174 0.035 0.000 - 0.826 0.305 0.014 | | | |
| 5. | Cubeful 2-ply | 24/23 11/8 | Eq.: | -0.853 (-0.084) | |
| | | 0.142 0.023 0.000 - 0.858 0.219 0.004 | | | |
| * | 7. | Cubeful 2-ply | 13/10 11/10 | Eq.: | -0.868 (-0.098) |
| | | 0.151 0.027 0.000 - 0.849 0.259 0.008 | | | |

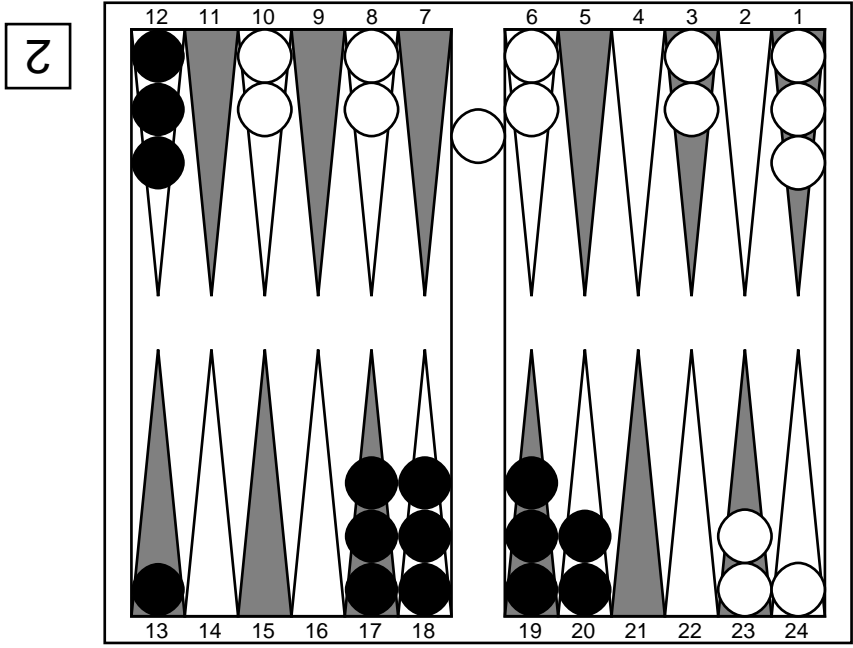
Move number 23: You to play 63



Position ID: Z8yMACywu4MDBA Match ID: QQlvAAAAAAAAA
 Pip counts: mikegrahamjr 140, You 133
 ● 63: 21/12*

- | | | | | | |
|---|----|---------------|---------------------------------------|------|--------|
| * | 1. | Cubeful 0-ply | 21/12* | Eq.: | +0.974 |
| | | | 0.873 0.302 0.012 - 0.127 0.016 0.000 | | |

Move number 24: mikegrahamjr to play 11



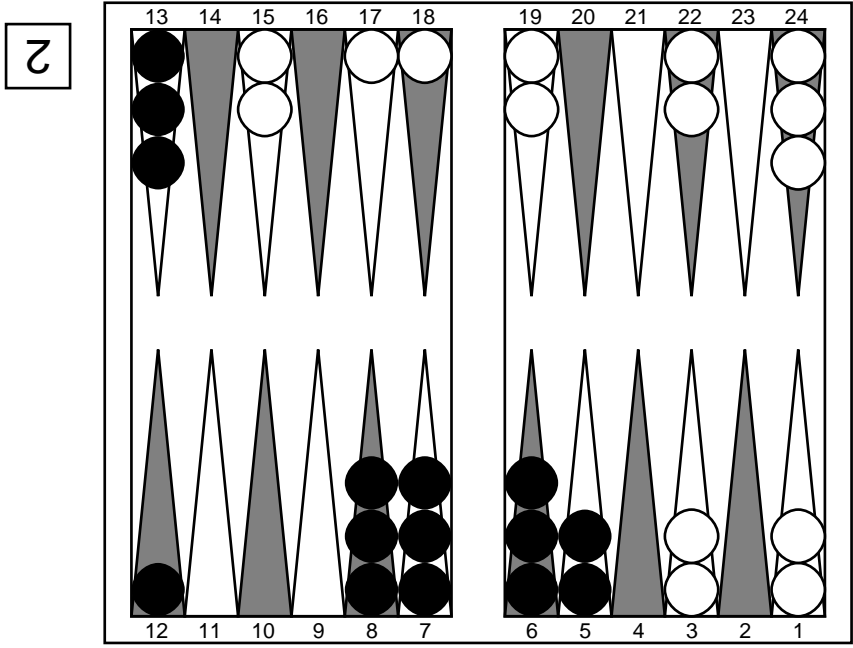
Position ID: Z8wMAFawu0MHAA Match ID: AYFkAAAAAAAAA
 Pip counts: mikegrahamjr 152, You 124

Cube analysis
 2-ply cubeless equity -1.028 (Money: -1.042)
 0.127 0.016 0.000 - 0.873 0.300 0.012
 Cubeful equities:
 1. No double -0.972
 2. Double, pass +1.000 (+1.972)
 3. Double, take -1.487 (-0.514)
 Proper cube action: No redouble, take (20.7%)

○ 11: bar/24 23/22(2) 8/7?!

- 1. Cubeful 2-ply bar/22 23/22 Eq.: -0.837
 0.156 0.014 0.000 - 0.844 0.235 0.005
- 2. Cubeful 2-ply bar/24 23/21 23/22 Eq.: -0.887 (-0.050)
 0.154 0.018 0.000 - 0.846 0.282 0.016
- * 3. Cubeful 2-ply bar/24 23/22(2) 8/7 Eq.: -0.887 (-0.050)
 0.143 0.014 0.000 - 0.857 0.253 0.008

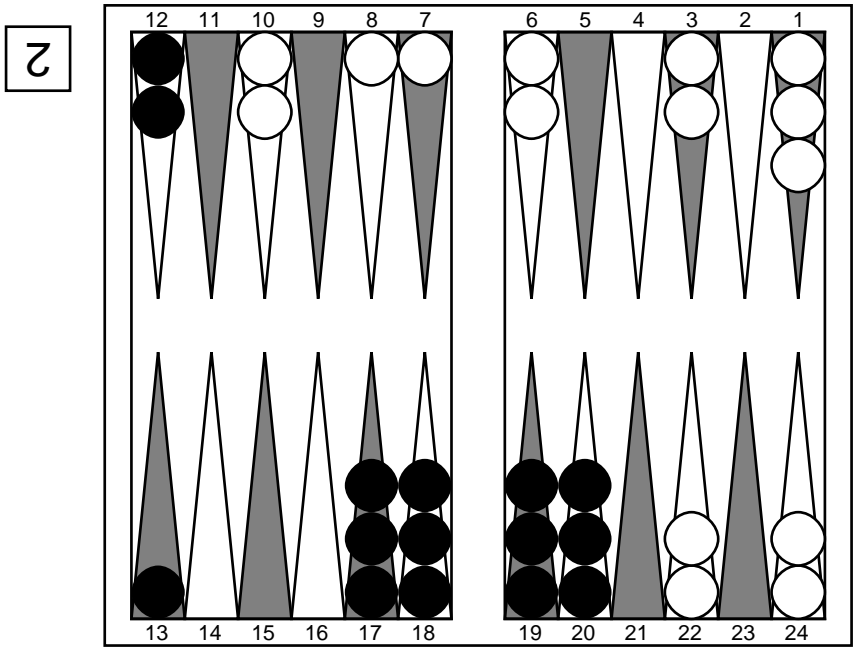
Move number 25: You to play 35



Position ID: Z6wMAD0wu0MHAA Match ID: QY11AAAAAAAAA
 Pip counts: mikegrahamjr 148, You 124
 ● 35: 13/5

* 1. Cube/ful 2-ply 13/5 Eq.: +0.942
 0.869 0.280 0.011 - 0.131 0.017 0.000

Move number 26: mikegrahamjr to play 22



Position ID: Z6wMADNwd4cGAA Match ID: AQFpAAAAAAAAA
 Pip counts: mikegrahamjr 148, You 116

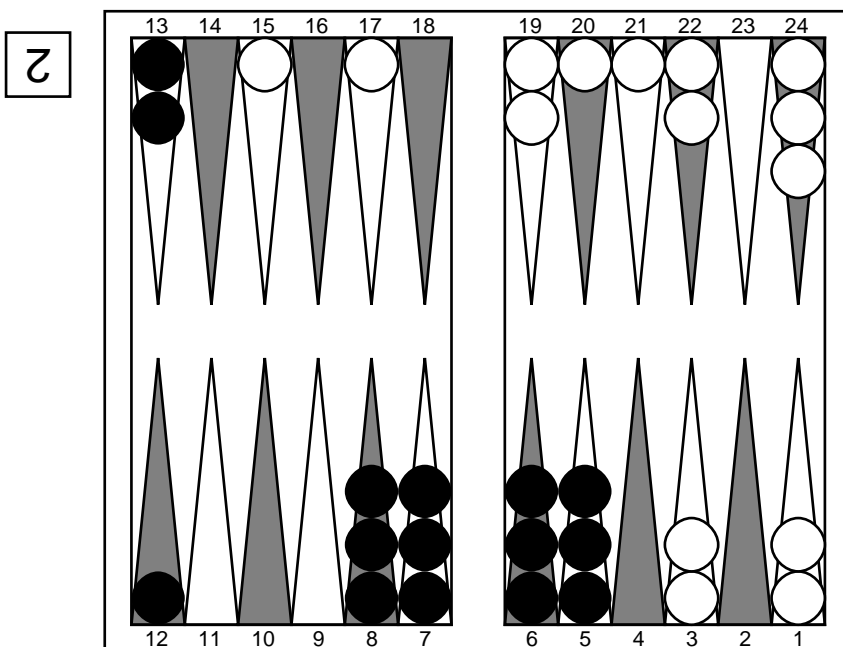
Cube analysis
 2-ply cubeless equity -0.998 (Money: -1.011)

0.131 0.017 0.000 - 0.869 0.280 0.011
 Cubeful equities:
 1. No double -0.942
 2. Double, pass +1.000 (+1.942)
 3. Double, take -1.470 (-0.528)
 Proper cube action: No redouble, take (21.4%)

○ 22: 10/4 7/5?

- | | | | | |
|----|---------------|---------------------------------------|------|-----------------|
| 1. | Cubeful 2-ply | 24/22(2) 6/4(2) | Eq.: | -0.778 |
| | | 0.147 0.011 0.000 - 0.853 0.147 0.001 | | |
| 2. | Cubeful 2-ply | 24/22(2) 8/6 7/5 | Eq.: | -0.779 (-0.002) |
| | | 0.144 0.011 0.000 - 0.856 0.143 0.001 | | |
| 3. | Cubeful 2-ply | 24/22(2) 8/4 | Eq.: | -0.780 (-0.003) |
| | | 0.144 0.011 0.000 - 0.856 0.143 0.001 | | |
| 4. | Cubeful 2-ply | 24/22(2) 10/6 | Eq.: | -0.784 (-0.006) |
| | | 0.143 0.010 0.000 - 0.857 0.144 0.001 | | |
| 5. | Cubeful 2-ply | 24/22(2) 10/8 7/5 | Eq.: | -0.785 (-0.007) |
| | | 0.143 0.011 0.000 - 0.857 0.145 0.001 | | |
| * | 9. | Cubeful 2-ply 10/4 7/5 | Eq.: | -0.929 (-0.151) |
| | | 0.133 0.013 0.000 - 0.867 0.270 0.010 | | |

Move number 27: You to play 52



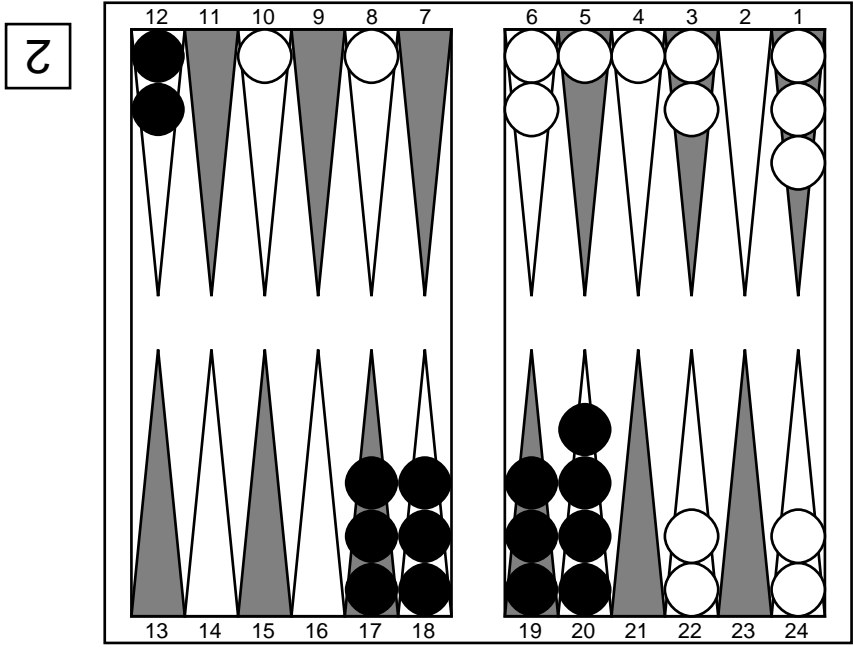
Position ID: ZzUJADNwd4cGAA Match ID: QYlqAAAAAAAA

Pip counts: mikegrahamjr 140, You 116

● 52: 12/5

- | | | | | |
|----|---------------|---------------------------------------|------|-----------------|
| 1. | Cubeful 2-ply | 13/8 12/10 | Eq.: | +0.932 |
| | | 0.863 0.285 0.014 - 0.137 0.021 0.000 | | |
| 2. | Cubeful 2-ply | 13/11 12/7 | Eq.: | +0.921 (-0.011) |
| | | 0.865 0.267 0.011 - 0.135 0.018 0.000 | | |
| 3. | Cubeful 2-ply | 13/11 13/8 | Eq.: | +0.918 (-0.013) |
| | | 0.865 0.265 0.011 - 0.135 0.018 0.000 | | |
| 4. | Cubeful 2-ply | 13/6 | Eq.: | +0.912 (-0.019) |
| | | 0.860 0.274 0.011 - 0.140 0.020 0.000 | | |
| * | 5. | Cubeful 2-ply 12/5 | Eq.: | +0.900 (-0.031) |
| | | 0.857 0.268 0.011 - 0.143 0.020 0.000 | | |

Move number 28: mikegrahamjr to play 32



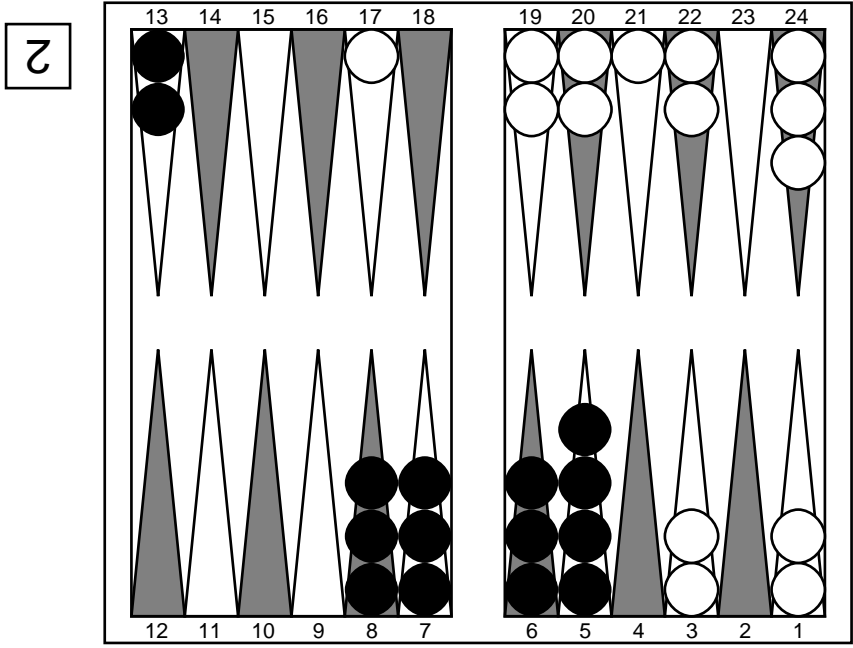
Position ID: ZzUJADPw7g4GAA Match ID: AYFpAAAAAAAAA
 Pip counts: mikegrahamjr 140, You 109

Cube analysis
 2-ply cubeless equity -0.961 (Money: -0.973)
 0.143 0.020 0.000 - 0.857 0.268 0.011
 Cubeful equities:
 1. No double -0.900
 2. Double, pass +1.000 (+1.900)
 3. Double, take -1.424 (-0.524)
 Proper cube action: No redouble, take (21.6%)

○ 32: 10/5?!

- | | | | |
|--------------------|---------------------------------------|------|-----------------|
| 1. Cubeful 2-ply | 24/22 8/5 | Eq.: | -0.803 |
| | 0.153 0.014 0.000 - 0.847 0.190 0.003 | | |
| 2. Cubeful 2-ply | 24/22 24/21 | Eq.: | -0.807 (-0.005) |
| | 0.159 0.019 0.000 - 0.841 0.215 0.005 | | |
| 3. Cubeful 2-ply | 24/22 10/7 | Eq.: | -0.835 (-0.033) |
| | 0.144 0.013 0.000 - 0.856 0.202 0.003 | | |
| 4. Cubeful 2-ply | 24/22 5/2 | Eq.: | -0.851 (-0.049) |
| | 0.140 0.013 0.000 - 0.860 0.208 0.003 | | |
| 5. Cubeful 2-ply | 24/21 8/6 | Eq.: | -0.856 (-0.053) |
| | 0.165 0.021 0.000 - 0.835 0.280 0.008 | | |
| * 8. Cubeful 2-ply | 10/5 | Eq.: | -0.868 (-0.065) |
| | 0.152 0.015 0.000 - 0.848 0.257 0.010 | | |

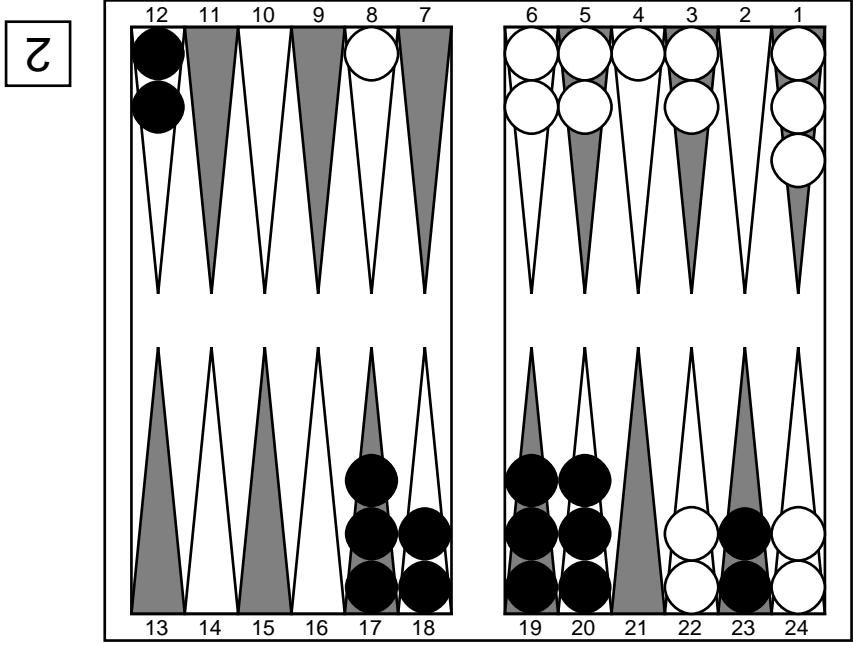
Move number 29: You to play 53



Position ID: Z20CADPw7g4GAA Match ID: QYluAAAAAAAA
 Pip counts: mikegrahamjr 135, You 109
 ● 53: 7/2 5/2

* 1. Cubeful 2-ply 7/2 5/2 Eq.: +0.891
 0.853 0.269 0.008 - 0.147 0.020 0.000

Move number 30: mikegrahamjr to play 24



Position ID: Z20CADPG3Q4GAA Match ID: AQFxAAAAAAAA
 Pip counts: mikegrahamjr 135, You 101

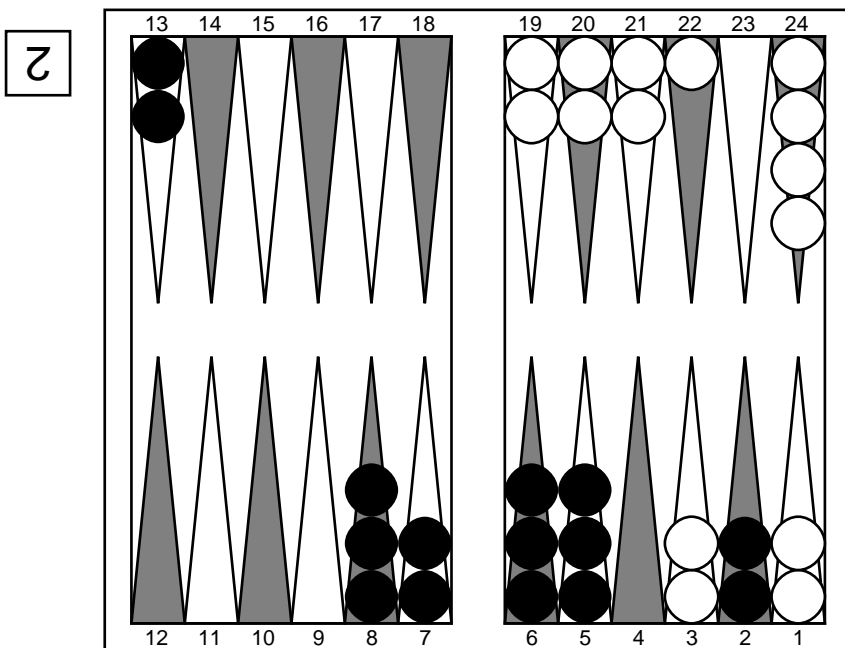
Cube analysis
 2-ply cubeless equity -0.954 (Money: -0.963)

0.147 0.020 0.000 - 0.853 0.269 0.008
 Cubeful equities:
 1. No double -0.891
 2. Double, pass +1.000 (+1.891)
 3. Double, take -1.408 (-0.517)
 Proper cube action: No redouble, take (21.5%)

○ 24: 8/4 3/1??

- | | | | | | |
|----|---------------|---------------------------------------|---------|-----------------|-----------------|
| 1. | Cubeful 2-ply | 24/22 8/4 | Eq.: | -0.751 | |
| | | 0.170 0.016 0.000 - 0.830 0.182 0.002 | | | |
| 2. | Cubeful 2-ply | 8/4 6/4 | Eq.: | -0.880 (-0.129) | |
| | | 0.151 0.015 0.000 - 0.849 0.267 0.010 | | | |
| 3. | Cubeful 2-ply | 6/4 6/2 | Eq.: | -0.883 (-0.132) | |
| | | 0.148 0.014 0.000 - 0.852 0.262 0.009 | | | |
| * | 4. | Cubeful 2-ply | 8/4 3/1 | Eq.: | -0.943 (-0.192) |
| | | 0.138 0.011 0.000 - 0.862 0.296 0.012 | | | |

Move number 31: You to play 55



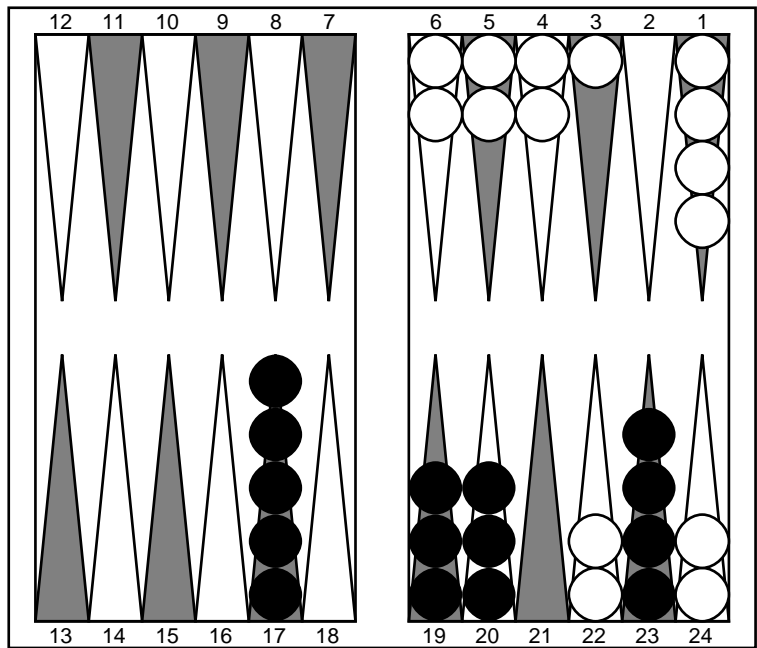
Position ID: T9sAADPG3Q4GAA Match ID: QY12AAAAAAA
 Pip counts: mikegrahamjr 129, You 101

● 55: 13/8(2) 7/2(2)

- | | | | | | |
|---|----|---------------|---------------------------------------|------|--------|
| * | 1. | Cubeful 0-ply | 13/8(2) 7/2(2) | Eq.: | +0.742 |
| | | | 0.807 0.236 0.008 - 0.193 0.018 0.000 | | |

Move number 32: mikegrahamjr to play 12

2



Position ID: T9sAADMedz4AAA Match ID: AYFoAAAAAAAAA
 Pip counts: mikegrahamjr 129, You 81

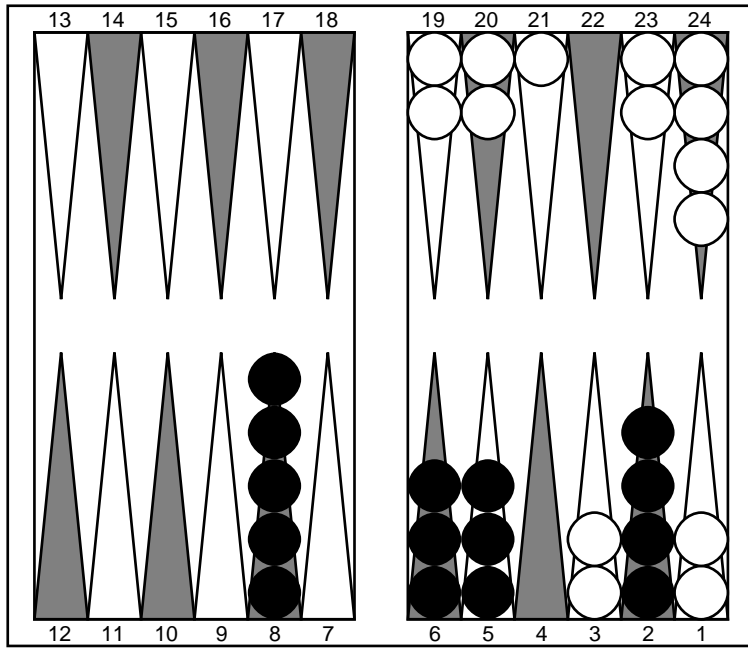
Cube analysis
 2-ply cubeless equity -0.823 (Money: -0.832)
 0.195 0.017 0.000 - 0.805 0.232 0.008
 Cubeful equities:
 1. No double -0.734
 2. Double, pass +1.000 (+1.734)
 3. Double, take -1.216 (-0.482)
 Proper cube action: No redouble, take (21.7%)

○ 12: 4/2 3/2

- | | | | |
|--------------------|---------------------------------------|------|------------------|
| 1. Cubeful 2-ply | 6/3 | Eq.: | -0.660 |
| | 0.230 0.022 0.000 - 0.770 0.248 0.009 | | |
| 2. Cubeful 2-ply | 5/4 5/3 | Eq.: | -0.669 (-0.009) |
| | 0.222 0.020 0.000 - 0.778 0.236 0.007 | | |
| 3. Cubeful 2-ply | 24/21 | Eq.: | -0.673 (-0.014) |
| | 0.232 0.023 0.000 - 0.768 0.269 0.005 | | |
| 4. Cubeful 2-ply | 4/3 4/2 | Eq.: | -0.686 (-0.026) |
| | 0.219 0.021 0.000 - 0.781 0.246 0.008 | | |
| * 5. Cubeful 2-ply | 4/2 3/2 | Eq.: | -0.689 (-0.029) |
| | 0.219 0.021 0.000 - 0.781 0.249 0.007 | | |

Move number 33: You to play 55

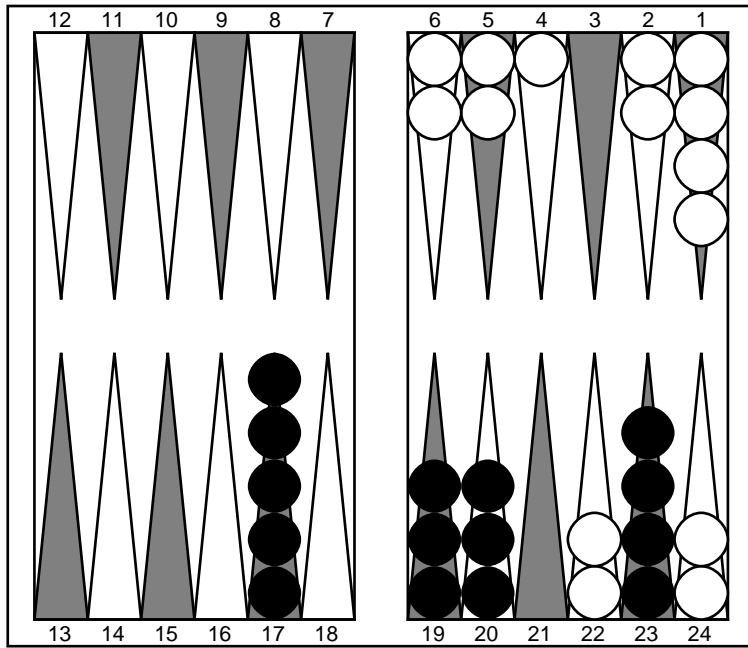
2



Position ID: b9oAADMedz4AAA Match ID: QY12AAAAAAAA
 Pip counts: mikegrahamjr 126, You 81
 ● 55:

Move number 34: mikegrahamjr to play 32

2



Position ID: b9oAADMedz4AAA Match ID: AYFpAAAAAAAA
 Pip counts: mikegrahamjr 126, You 81

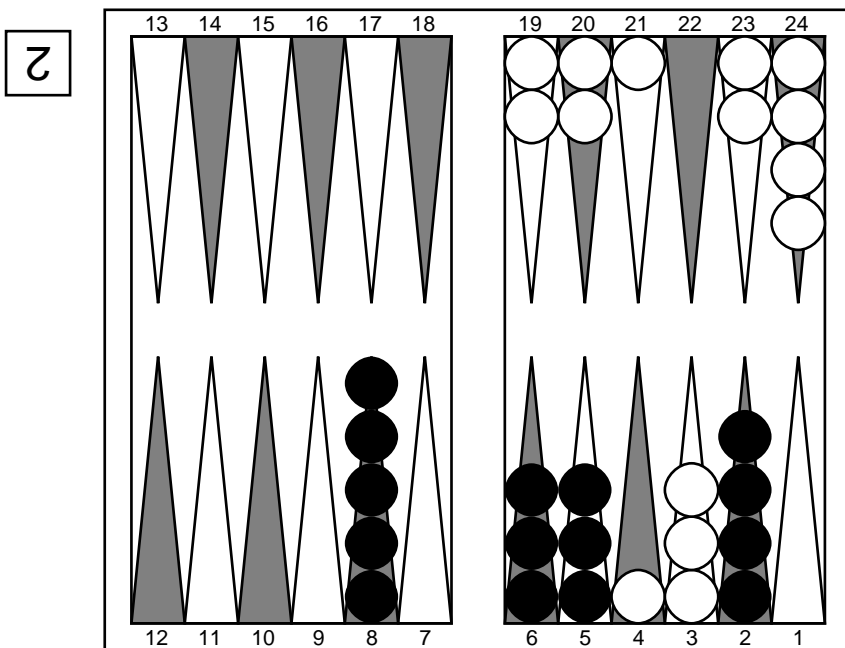
Cube analysis
 2-ply cubeless equity -0.843 (Money: -0.850)
 0.185 0.014 0.000 - 0.815 0.228 0.006
 Cubeless equities:
 1. No double -0.757

2. Double, pass +1.000 (+1.757)
 3. Double, take -1.257 (-0.500)
 Proper cube action: No redouble, take (22.1%)

○ 32: 24/22 24/21

* 1. Cubeful 2-ply 24/22 24/21 Eq.: -0.702
 0.197 0.015 0.000 - 0.803 0.202 0.001

Move number 35: You to play 35



Position ID: b9oAgA4edz4AAA Match ID: QY11AAAAAAAA

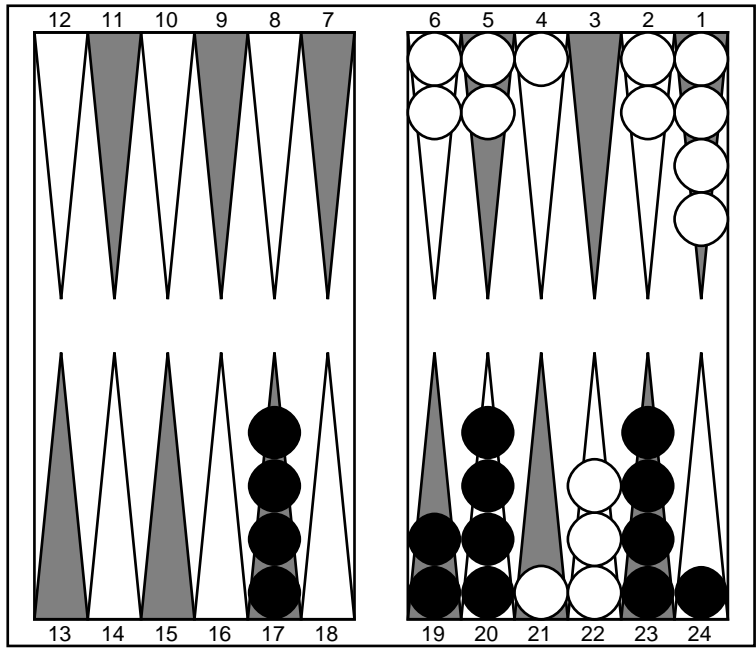
Pip counts: mikegrahamjr 121, You 81

● 35: 8/5 6/1

* 1. Cubeful 2-ply 8/5 6/1 Eq.: +0.734
 0.830 0.162 0.001 - 0.170 0.007 0.000

Move number 36: mikegrahamjr to play 41

2



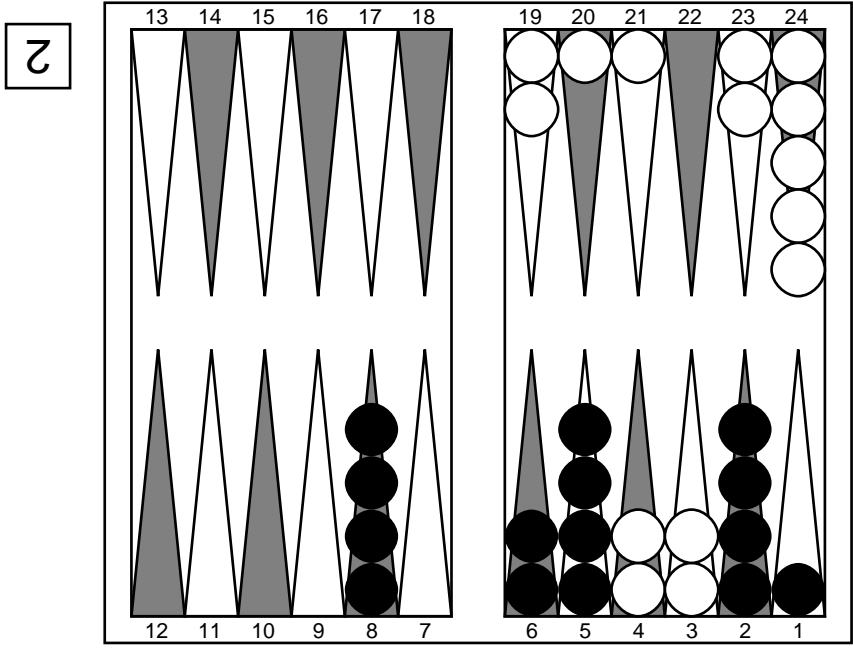
Position ID: b9oAgA493jwAAA Match ID: AQFmAAAAAAAAA
 Pip counts: mikegrahamjr 121, You 73

Cube analysis
 2-ply cubeless equity -0.813 (Money: -0.815)
 0.170 0.007 0.000 - 0.830 0.162 0.001
 Cubeful equities:
 1. No double -0.734
 2. Double, pass +1.000 (+1.734)
 3. Double, take -1.314 (-0.580)
 Proper cube action: No redouble, take (25.1%)

○ 41: 22/21 5/1?

- | | | | |
|--------------------|---------------------------------------|------|-----------------|
| 1. Cubeful 2-ply | 22/18 5/4 | Eq.: | -0.675 |
| | 0.209 0.016 0.000 - 0.791 0.204 0.001 | | |
| 2. Cubeful 2-ply | 22/18 4/3 | Eq.: | -0.692 (-0.017) |
| | 0.204 0.016 0.000 - 0.796 0.210 0.001 | | |
| 3. Cubeful 2-ply | 5/4 5/1 | Eq.: | -0.758 (-0.082) |
| | 0.182 0.011 0.000 - 0.818 0.218 0.001 | | |
| 4. Cubeful 2-ply | 22/18 6/5 | Eq.: | -0.761 (-0.086) |
| | 0.187 0.013 0.000 - 0.813 0.236 0.002 | | |
| * 5. Cubeful 2-ply | 22/21 5/1 | Eq.: | -0.766 (-0.091) |
| | 0.179 0.012 0.000 - 0.821 0.221 0.001 | | |

Move number 37: You to play 23



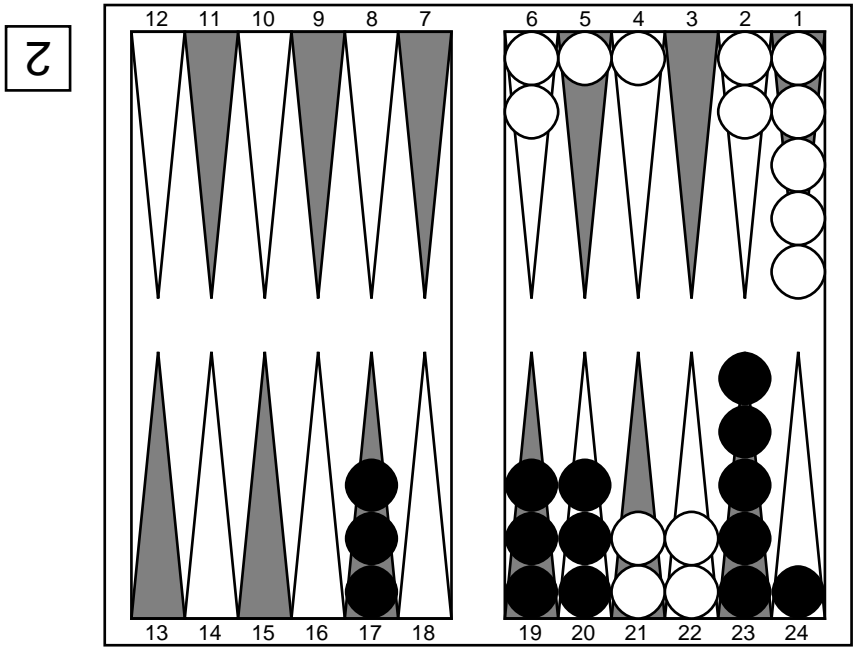
Position ID: 39QAgA093jwAAA Match ID: QQ1tAAAAAAAA

Pip counts: mikegrahamjr 116, You 73

● 23: 8/6 5/2?!

- | | | | |
|---|----|---------------------------------------|----------------------|
| | 1. | Cubeful 2-ply 8/6 8/5 | Eq.: +0.966 |
| | | 0.882 0.265 0.002 - 0.118 0.003 0.000 | |
| * | | ?? Cubeful 2-ply 8/6 5/2 | Eq.: +0.903 (-0.063) |
| | | 0.874 0.220 0.001 - 0.126 0.003 0.000 | |

Move number 38: mikegrahamjr to play 66



Position ID: 39QAgA193DkAAA Match ID: AQF7AAAAAAAA

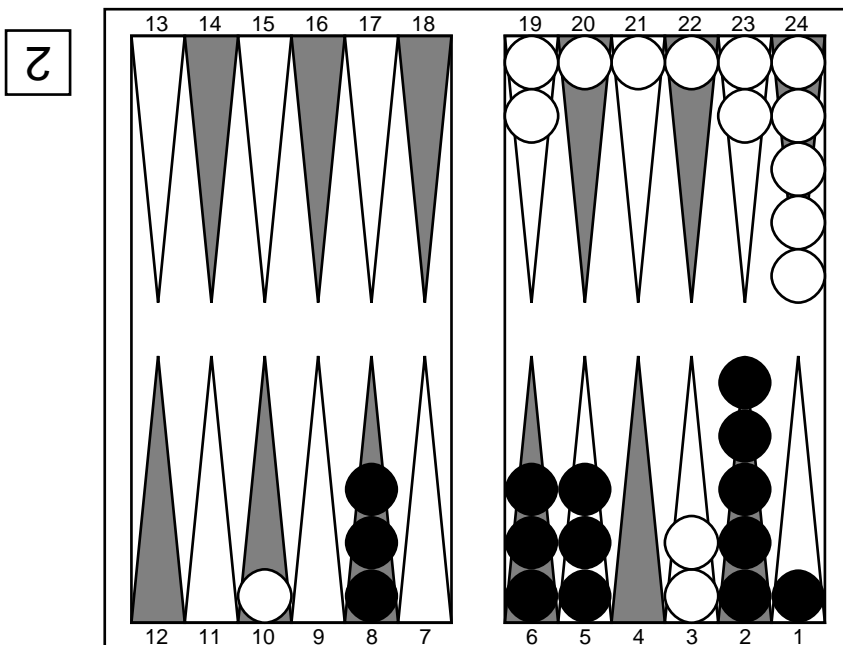
Pip counts: mikegrahamjr 116, You 68

Cube analysis
 2-ply cubeless equity -0.965 (Money: -0.967)
 0.126 0.003 0.000 - 0.874 0.220 0.001
 Cubeful equities:
 1. No double -0.903
 2. Double, pass +1.000 (+1.903)
 3. Double, take -1.493 (-0.590)
 Proper cube action: No redouble, take (23.7%)

○ 66: 21/3 21/15

- 1. Cubeful 2-ply 21/9(2) Eq.: -0.595
 0.180 0.004 0.000 - 0.820 0.039 0.000
- * 2. Cubeful 2-ply 21/3 21/15 Eq.: -0.626 (-0.031)
 0.170 0.004 0.000 - 0.830 0.047 0.000

Move number 39: You to play 55

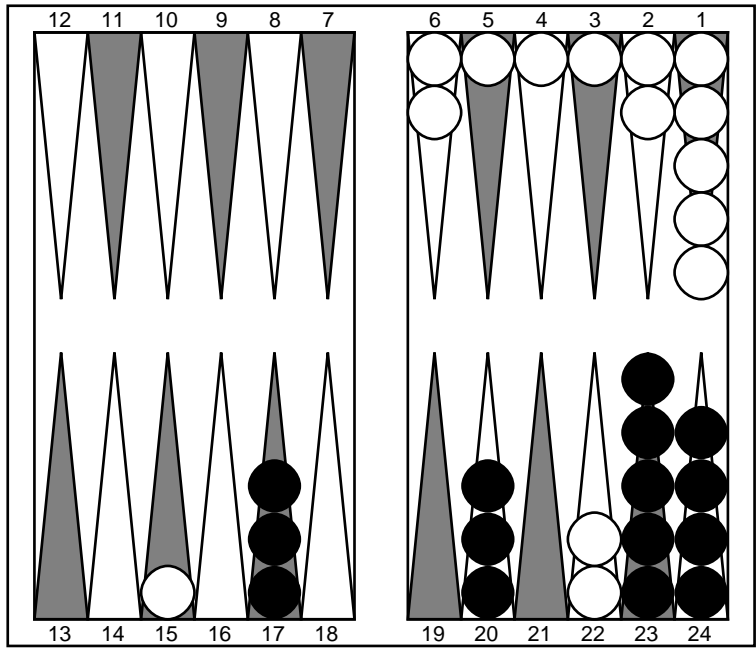


Position ID: 36oBBax93DkAAA Match ID: QY12AAAAAAA
 Pip counts: mikegrahamjr 92, You 68
 ● 55: 6/1(3)

- * 1. Cubeful 0-ply 6/1(3) Eq.: +0.669
 0.842 0.059 0.000 - 0.158 0.001 0.000

Move number 40: mikegrahamjr to play 46

2



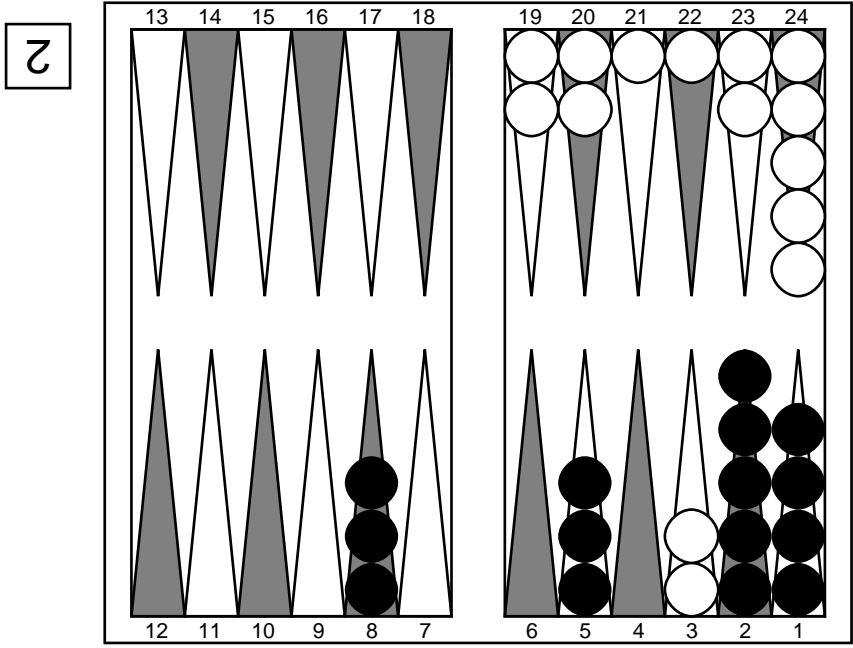
Position ID: 36oBBAzv4zgAAA Match ID: AQF6AAAAAAAAA
 Pip counts: mikegrahamjr 92, You 53

Cube analysis
 2-ply cubeless equity -0.643 (Money: -0.643)
 0.191 0.004 0.000 - 0.809 0.028 0.000
 Cubeful equities:
 1. No double -0.558
 2. Double, pass +1.000 (+1.558)
 3. Double, take -1.234 (-0.676)
 Proper cube action: No redouble, take (30.3%)

○ 46: 15/5

* 1. Cubeful 2-ply 15/5 Eq.: -0.495
 0.215 0.007 0.000 - 0.785 0.027 0.000

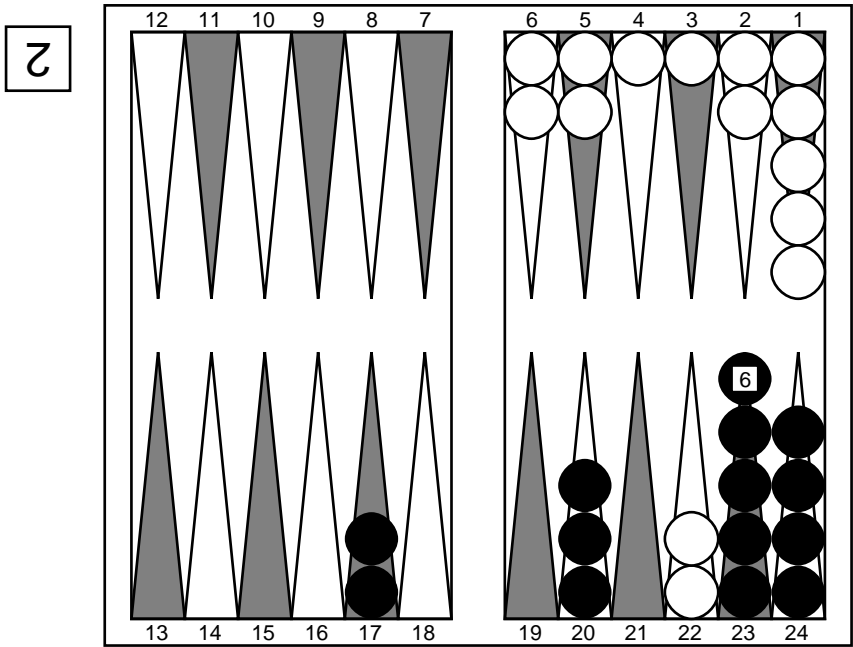
Move number 41: You to play 51



Position ID: 32oDAAzv4zgAAA Match ID: QYlmAAAAAAAA
 Pip counts: mikegrahamjr 82, You 53
 ● 51: 8/2

* 1. Cubeful 0-ply 8/2 Eq.: +0.512
 0.795 0.017 0.000 - 0.205 0.002 0.000

Move number 42: mikegrahamjr to play 42



Position ID: 32oDAAzvxzEAAA Match ID: AQFqAAAAAAAA
 Pip counts: mikegrahamjr 82, You 47

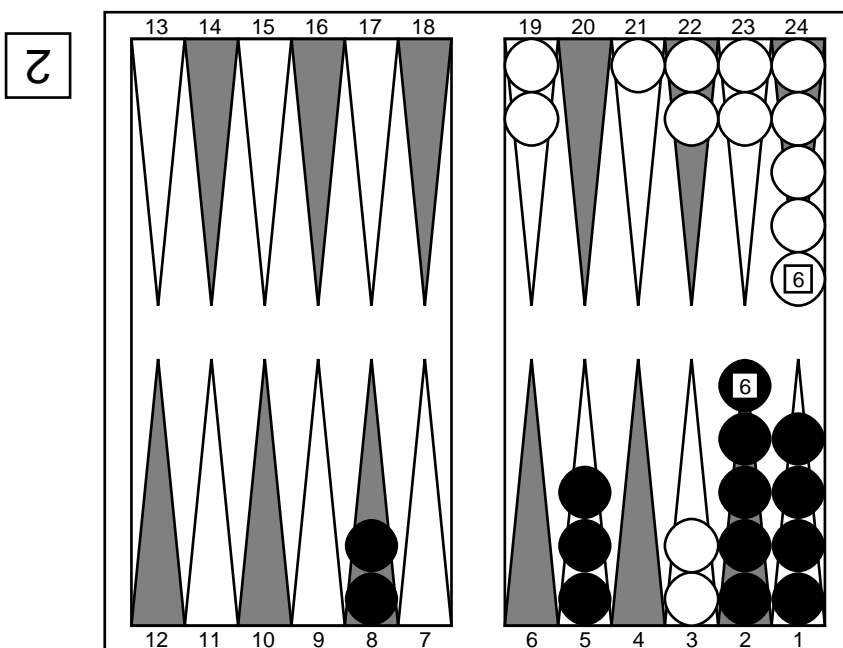
Cube analysis
 2-ply cubeless equity -0.602 (Money: -0.602)

0.204 0.004 0.000 - 0.796 0.014 0.000
 Cubeful equities:
 1. No double -0.512
 2. Double, pass +1.000 (+1.512)
 3. Double, take -1.181 (-0.669)
 Proper cube action: No redouble, take (30.7%)

○ 42: 5/3 5/1

- 1. Cubeful 2-ply 6/4 6/2 Eq.: -0.550
 0.193 0.001 0.000 - 0.807 0.025 0.000
- 2. Cubeful 2-ply 22/16 Eq.: -0.583 (-0.033)
 0.181 0.003 0.000 - 0.819 0.031 0.000
- * 3. Cubeful 2-ply 5/3 5/1 Eq.: -0.589 (-0.039)
 0.178 0.001 0.000 - 0.822 0.028 0.000

Move number 43: You to play 14



Position ID: vy0DAAzvzxEAAA Match ID: QYlwAAAAAAAAA

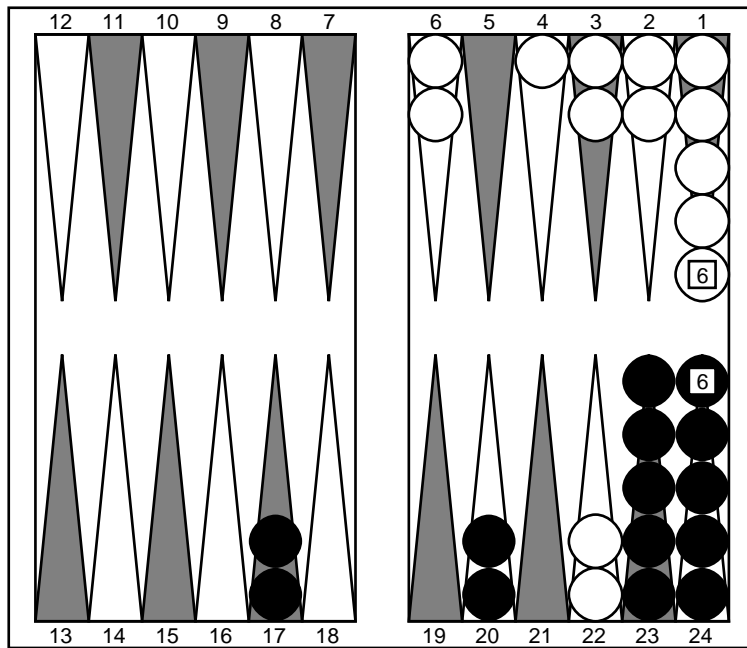
Pip counts: mikegrahamjr 76, You 47

● 14: 5/1 2/1

- * 1. Cubeful 0-ply 5/1 2/1 Eq.: +0.609
 0.835 0.013 0.000 - 0.165 0.001 0.000

Move number 44: mikegrahamjr to play 21

2



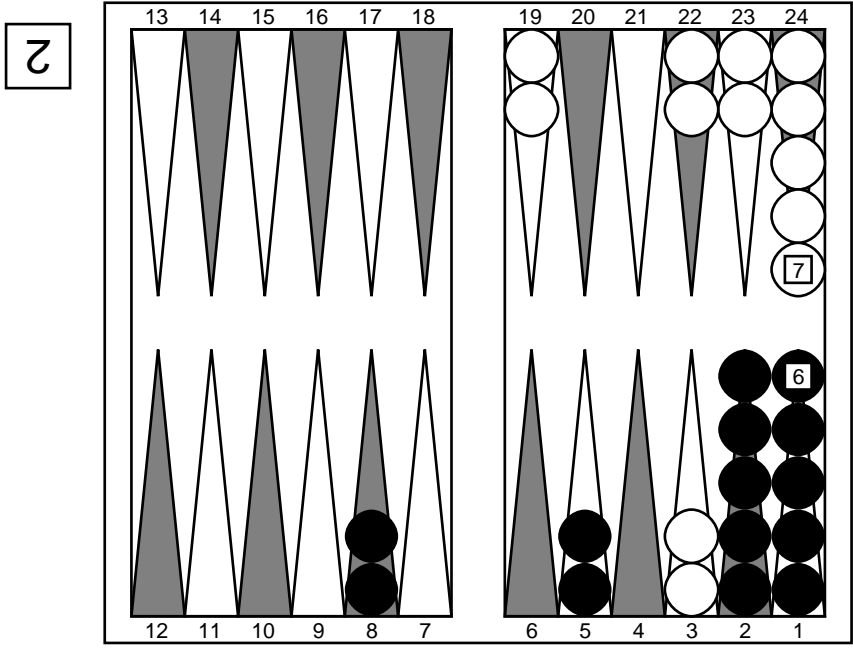
Position ID: vy0DAAy/jzEAAA Match ID: AQF1AAAAAAAAA
 Pip counts: mikegrahamjr 76, You 42

Cube analysis
 2-ply cubeless equity -0.621 (Money: -0.621)
 0.195 0.002 0.000 - 0.805 0.013 0.000
 Cubeful equities:
 1. No double -0.534
 2. Double, pass +1.000 (+1.534)
 3. Double, take -1.217 (-0.683)
 Proper cube action: No redouble, take (30.8%)

○ 21: 4/1

- 1. Cubeful 2-ply 6/5 6/4 Eq.: -0.505
 0.211 0.001 0.000 - 0.789 0.023 0.000
- * 2. Cubeful 2-ply 4/1 Eq.: -0.518 (-0.014)
 0.205 0.001 0.000 - 0.795 0.021 0.000

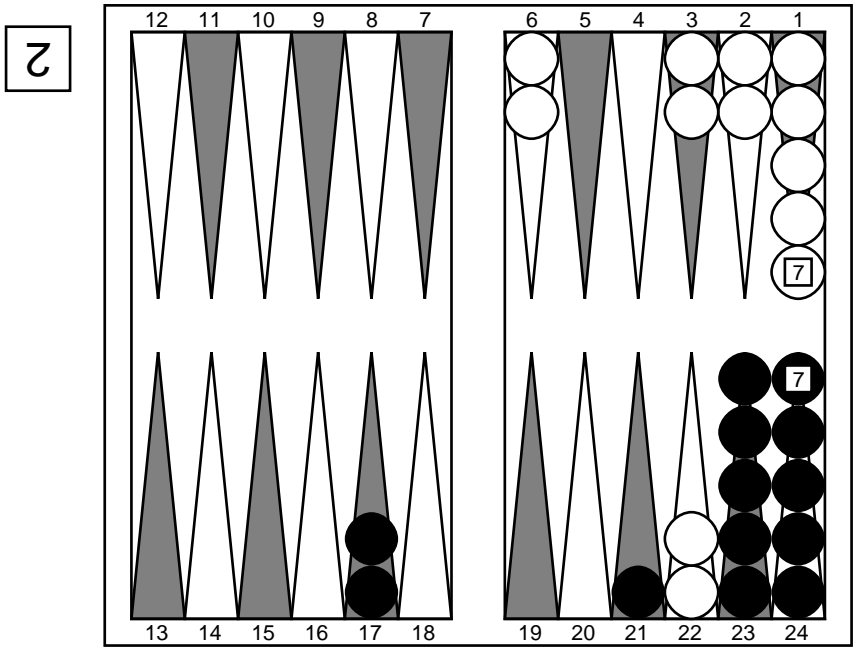
Move number 45: You to play 41



Position ID: fxsDAAy/jzEAAA Match ID: QQ1mAAAAAAAA
 Pip counts: mikegrahamjr 73, You 42
 ● 41: 5/4 5/1

* 1. Cubeful 2-ply 5/4 5/1 Eq.: +0.282
 0.707 0.007 0.000 - 0.293 0.005 0.000

Move number 46: mikegrahamjr to play 11



Position ID: fxsDAAx/nzAAAA Match ID: AYFkAAAAAAAA
 Pip counts: mikegrahamjr 73, You 37

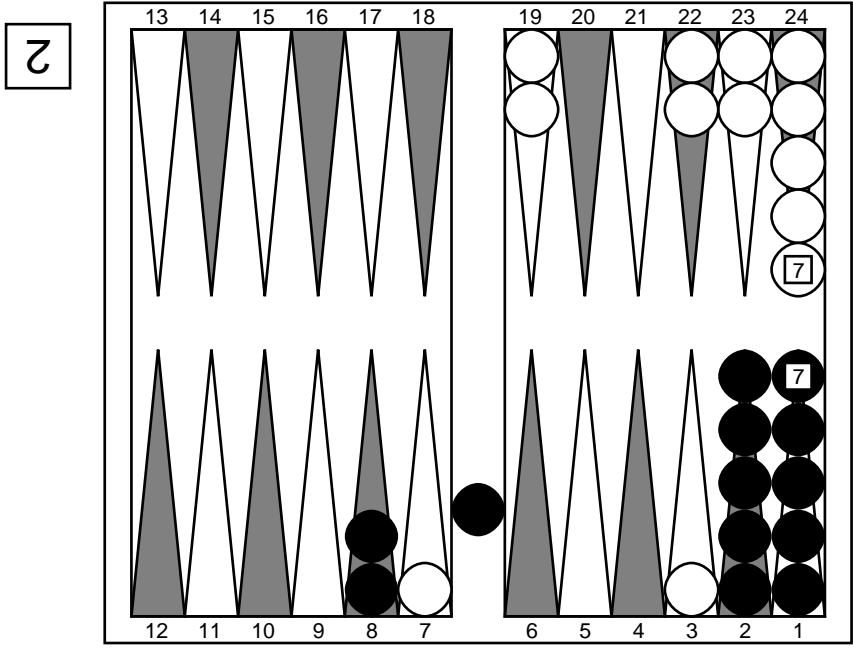
Cube analysis
 2-ply cubeless equity -0.416 (Money: -0.416)

0.293 0.005 0.000 - 0.707 0.007 0.000
 Cubeful equities:
 1. No double -0.282
 2. Double, pass +1.000 (+1.282)
 3. Double, take -0.824 (-0.542)
 Proper cube action: No redouble, take (29.7%)

○ 11+: 22/21*/18

* 1. Cubeful 2-ply 22/21*/18 Eq.: +0.259
 0.514 0.009 0.000 - 0.486 0.007 0.000

Move number 47: You to play 43

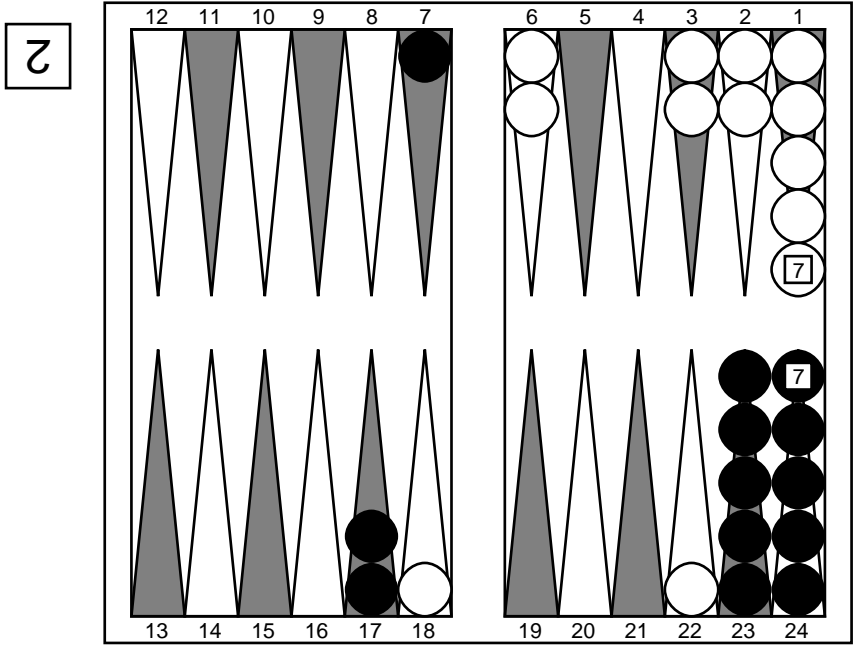


Position ID: fxsDQAh/HxgAQA Match ID: QQluAAAAAAAA
 Pip counts: mikegrahamjr 69, You 58

● 43: bar/18

* 1. Cubeful 0-ply bar/18 Eq.: -0.031
 0.579 0.003 0.000 - 0.421 0.003 0.000

Move number 48: mikegrahamjr to play 56



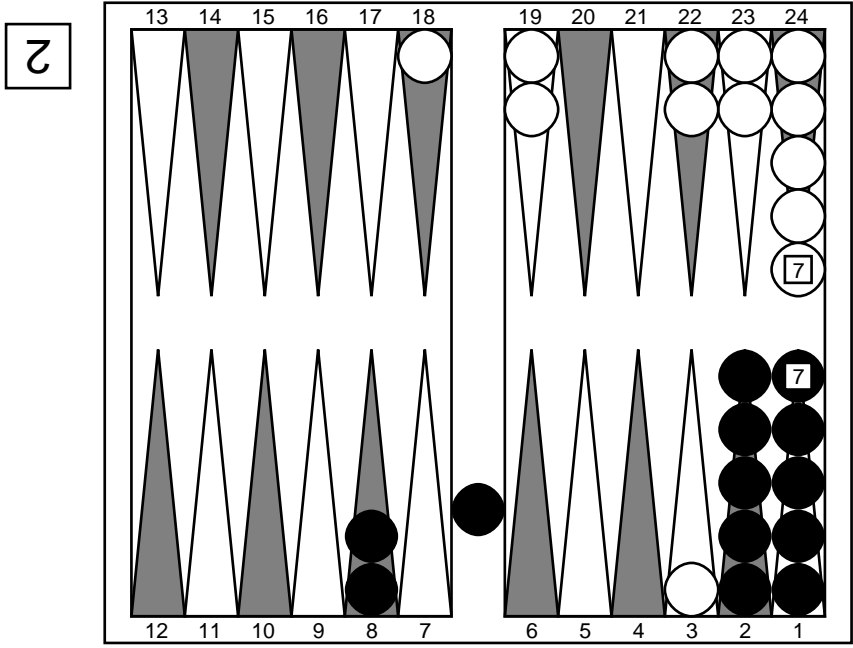
Position ID: fxsDQAh/HxiAAA Match ID: AYF6AAAAAAAAA
 Pip counts: mikegrahamjr 69, You 51

Cube analysis
 2-ply cubeless equity -0.214 (Money: -0.214)
 0.393 0.005 0.000 - 0.607 0.005 0.000
 Cubeful equities:
 1. No double -0.037
 2. Double, pass +1.000 (+1.037)
 3. Double, take -0.427 (-0.391)
 Proper cube action: No redouble, take (27.4%)

○ 56+: 18/7*

* 1. Cubeful 0-ply 18/7* Eq.: +0.515
 0.618 0.004 0.000 - 0.382 0.003 0.000

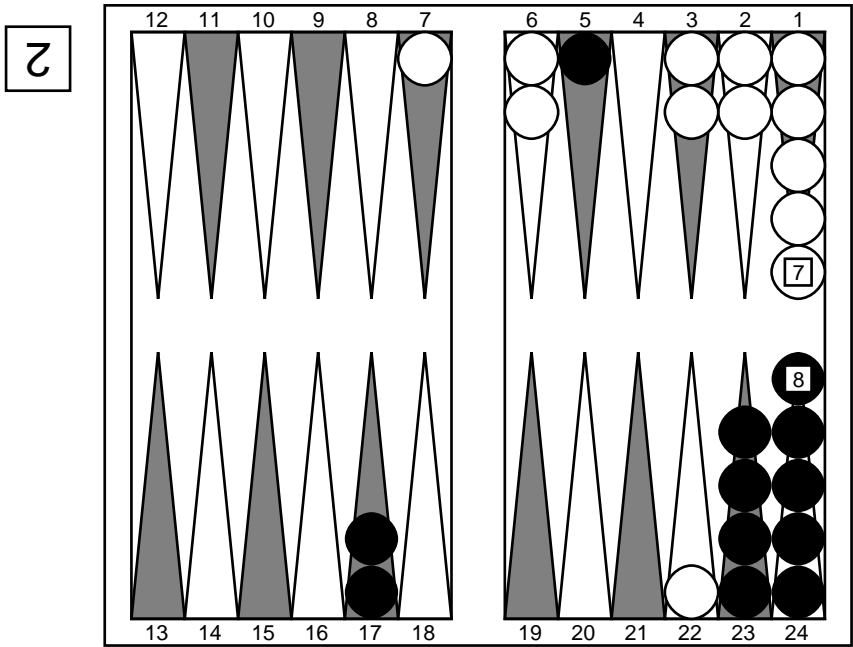
Move number 49: You to play 51



Position ID: fxsLAAh/HxgAQA Match ID: QYlmAAAAAAAA
 Pip counts: mikegrahamjr 58, You 58
 ● 51: bar/20 2/1

* 1. Cubeless 0-ply bar/20 2/1 Eq.: -0.575
 0.358 0.001 0.000 - 0.642 0.004 0.000

Move number 50: mikegrahamjr to play 23



Position ID: fxsLAAj/HhgAAg Match ID: AQFtAAAAAAAA
 Pip counts: mikegrahamjr 58, You 52

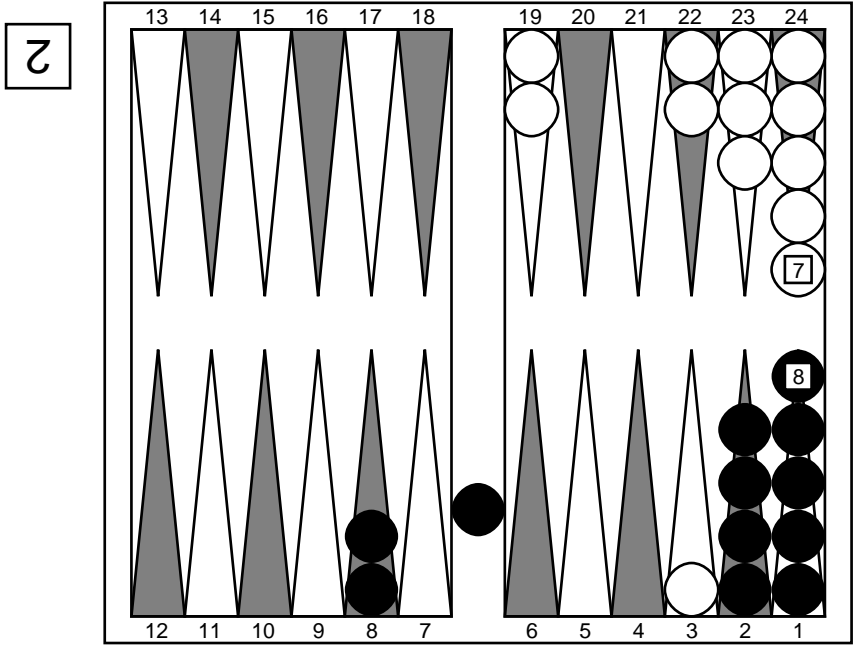
Cube analysis
 2-ply cubeless equity +0.207 (Money: +0.207)

0.602 0.004 0.000 - 0.398 0.000 0.000
 Cubeful equities:
 1. No double +0.470
 2. Double, pass +1.000 (+0.530)
 3. Double, take +0.406 (-0.064)
 Proper cube action: No redouble, take (10.7%)

○ 23: 7/5*/2

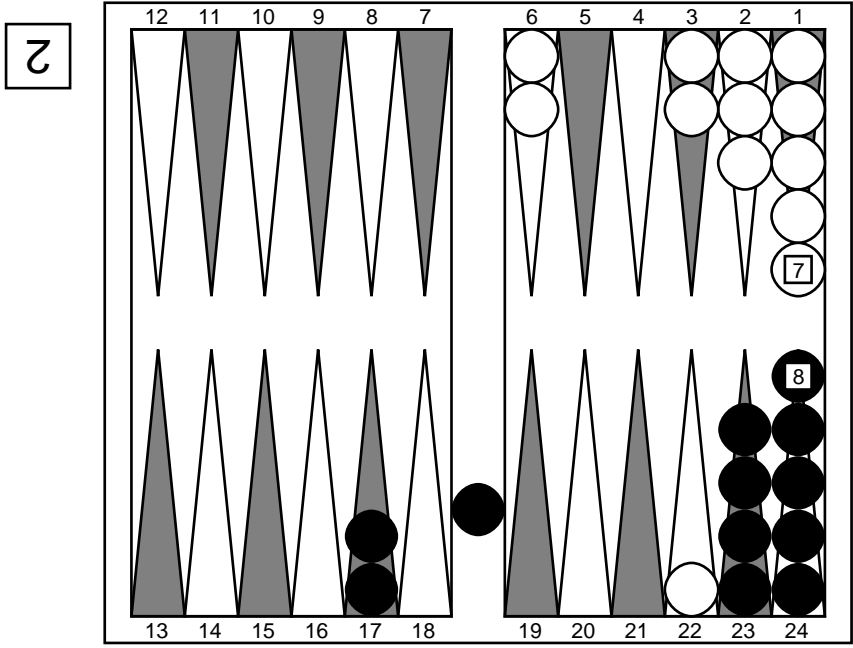
* 1. Cubeful 0-ply 7/5*/2 Eq.: +0.677
 0.684 0.003 0.000 - 0.316 0.000 0.000

Move number 51: You to play 26



Position ID: fzcGAAj/HhgAQA Match ID: QQ15AAAAAAA
 Pip counts: mikegrahamjr 53, You 57
 ● 26-:

Move number 52: mikegrahamjr to play 11



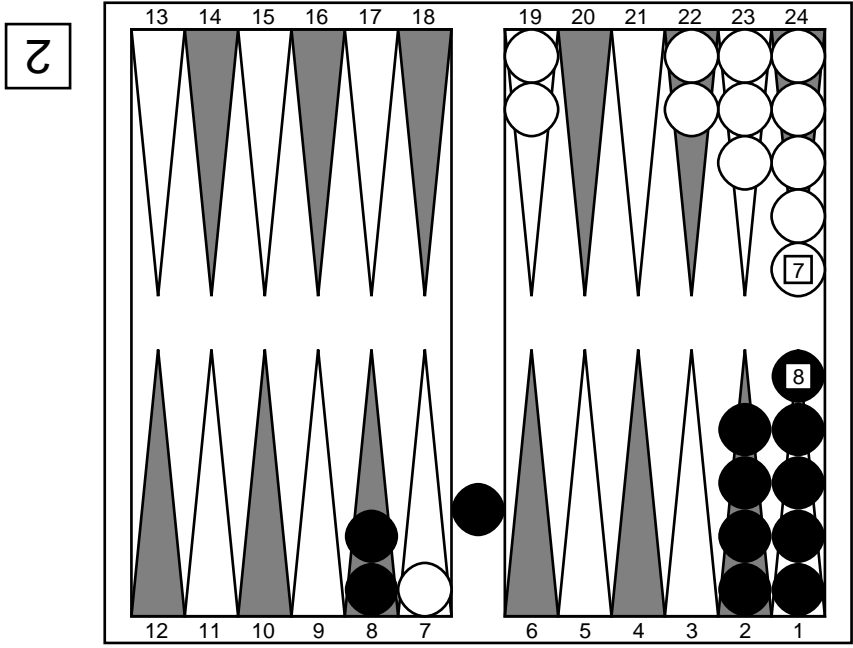
Position ID: fzcGAAj/HhgAQA Match ID: AYFkAAAAAAAAA
 Pip counts: mikegrahamjr 53, You 57

Cube analysis
 2-ply cubeless equity +0.554 (Money: +0.554)
 0.773 0.007 0.000 - 0.227 0.000 0.000
 Cubeful equities:
 1. Double, pass +1.000
 2. Double, take +1.091 (+0.091)
 3. No double +0.854 (-0.146)
 Proper cube action: Redouble, pass

○ 11: 22/18

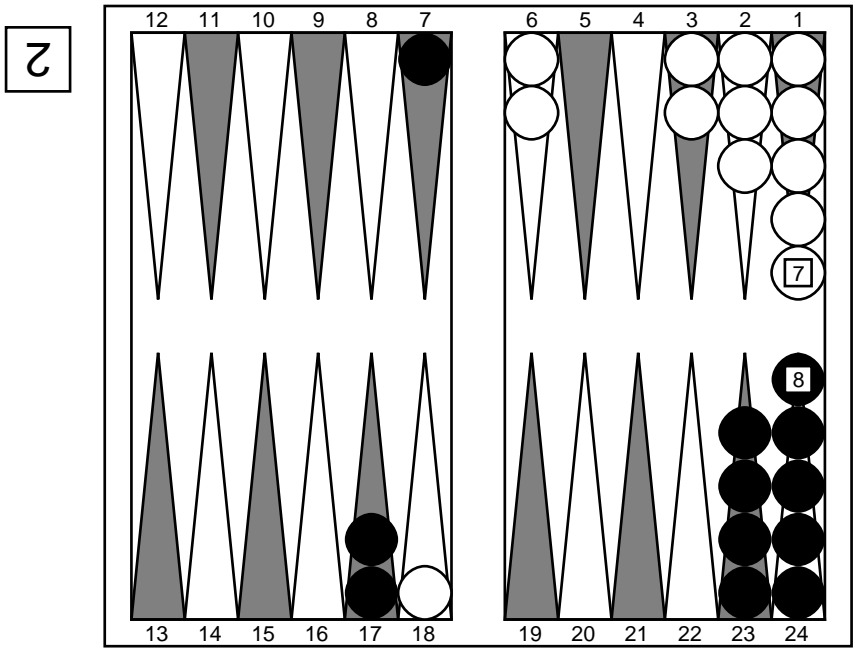
* 1. Cubeful 2-ply 22/18 Eq.: +0.821
 0.756 0.007 0.000 - 0.244 0.000 0.000

Move number 53: You to play 43



Position ID: fzcGgAD/HhgAQA Match ID: QQLuAAAAAAAA
 Pip counts: mikegrahamjr 49, You 57
 ● 43: bar/18

* 1. Cubeful 0-ply bar/18 Eq.: -0.625
 0.343 0.000 0.000 - 0.657 0.001 0.000



Position ID: fzcGgAD/HhiAAA Match ID: AQFgAAAAAAAA
 Pip counts: mikegrahamjr 49, You 50

Cube analysis
 2-ply cubeless equity +0.334 (Money: +0.334)
 0.666 0.002 0.000 - 0.334 0.000 0.000
 Cubeful equities:
 1. Double, take +0.662

2. Double, pass +1.000 (+0.338)
 3. No double +0.615 (-0.047)
 Proper cube action: Redouble, take

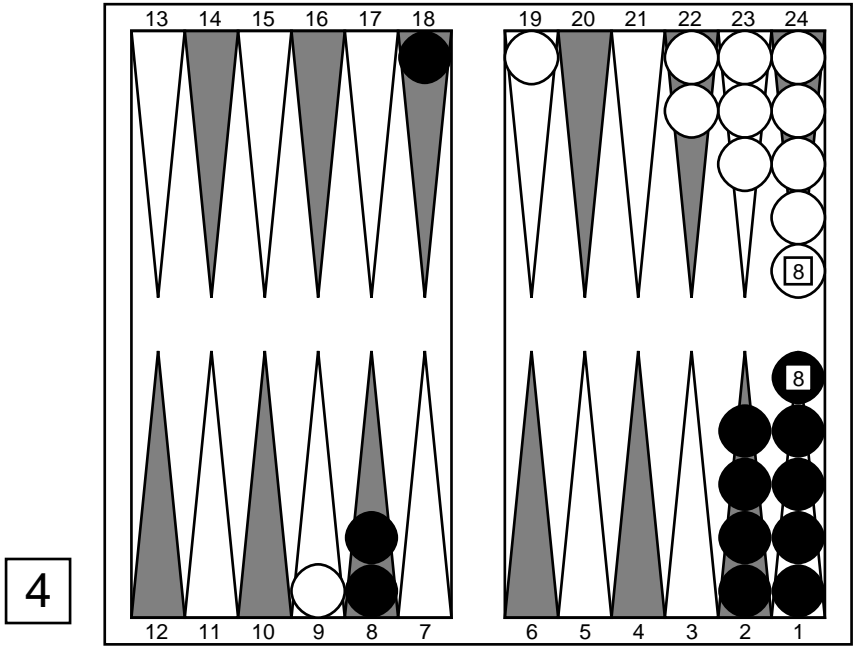
○ Double

● Take

○ 25: 18/16 6/1

* 1. Cubeful 2-ply 18/16 6/1 Eq.: +0.251
 0.625 0.001 0.000 - 0.375 0.000 0.000

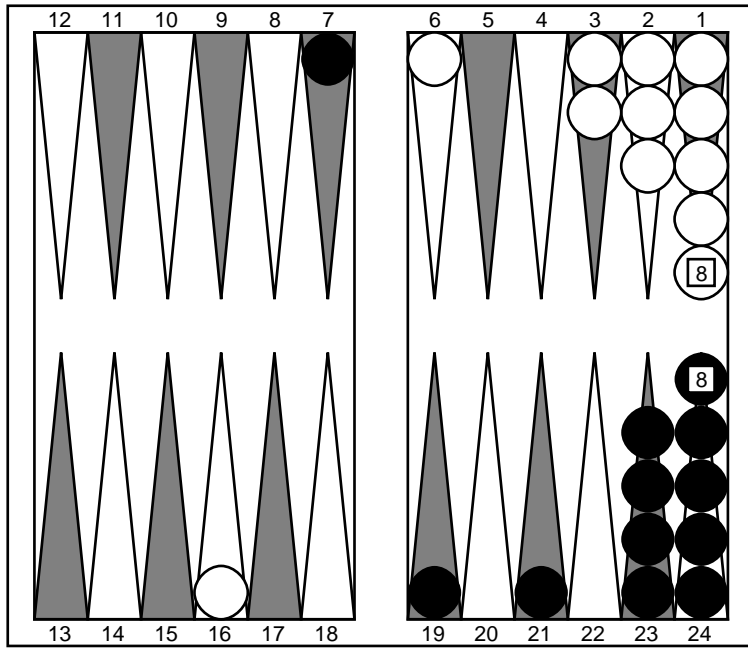
Move number 57: You to play 24



Position ID: /24EIAD/HhiAAA Match ID: UglxAAAAAAAAA
 Pip counts: mikegrahamjr 42, You 50
 ● 24: 8/6 8/4

* 1. Cubeful 2-ply 8/6 8/4 Eq.: -0.331
 0.334 0.000 0.000 - 0.666 0.006 0.000

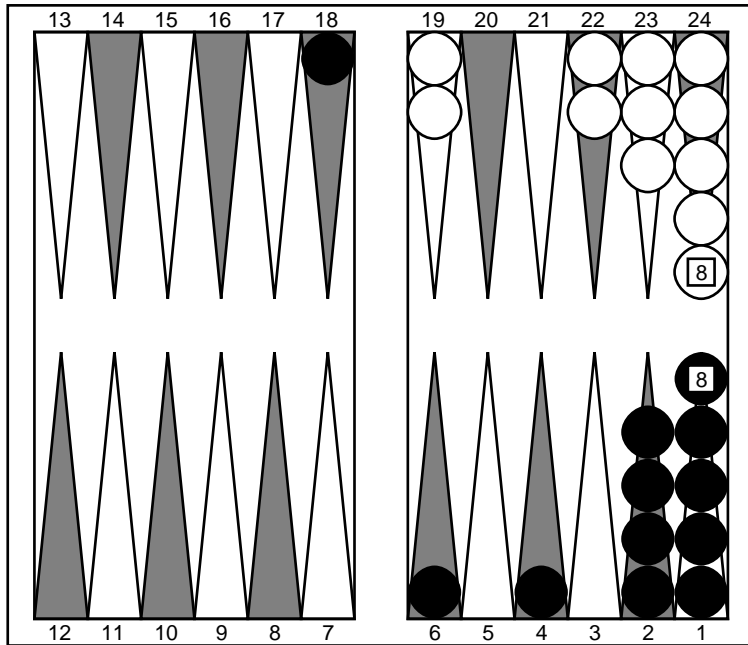
Move number 58: mikegrahamjr to play 46



Position ID: /24EIAD/ngSAAA Match ID: EgF6AAAAAAAAA
 Pip counts: mikegrahamjr 42, You 44
 ○ 46: 16/6

* 1. Cubeful 2-ply 16/6 Eq.: +0.531
 0.766 0.000 0.000 - 0.234 0.000 0.000

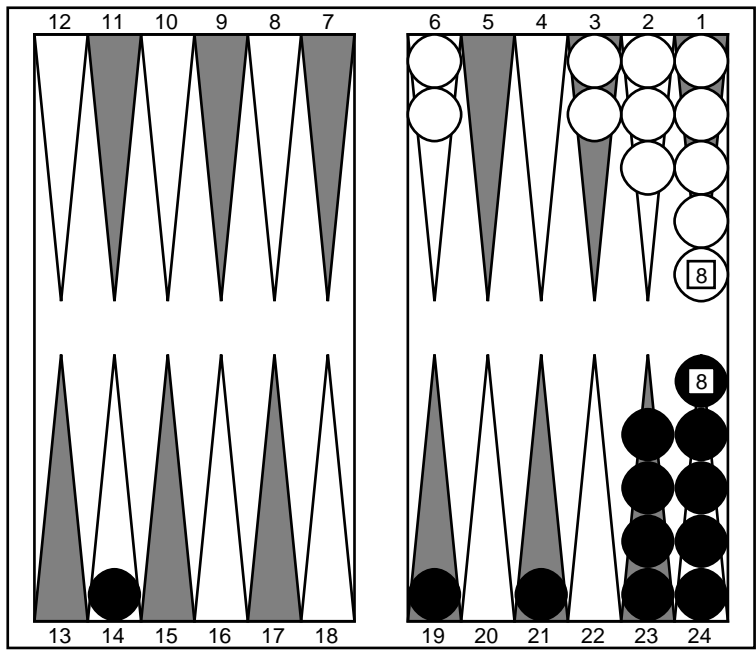
Move number 59: You to play 34



Position ID: /24MAAD/ngSAAA Match ID: UolxAAAAAAAAA
 Pip counts: mikegrahamjr 32, You 44
 ● 34: 18/11

* 1. Cubeful 2-ply 18/11 Eq.: -0.589
 0.205 0.000 0.000 - 0.795 0.000 0.000

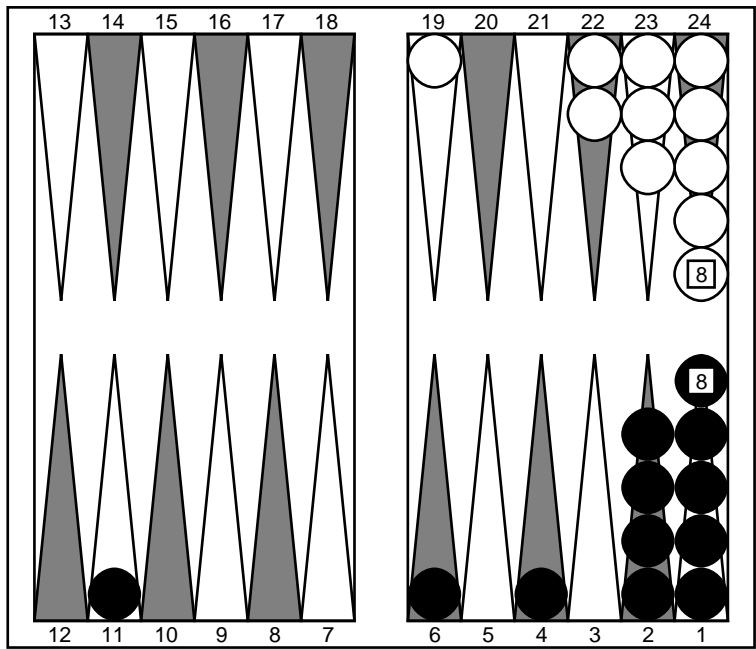
Move number 60: mikegrahamjr to play 15



Position ID: /24MAAD/ngQBAA Match ID: EoF0AAAAAAAA
 Pip counts: mikegrahamjr 32, You 37
 ○ 15: 6/off

* 1. Cubeful 0-ply 6/off Eq.: +0.523
 0.761 0.000 0.000 - 0.239 0.000 0.000

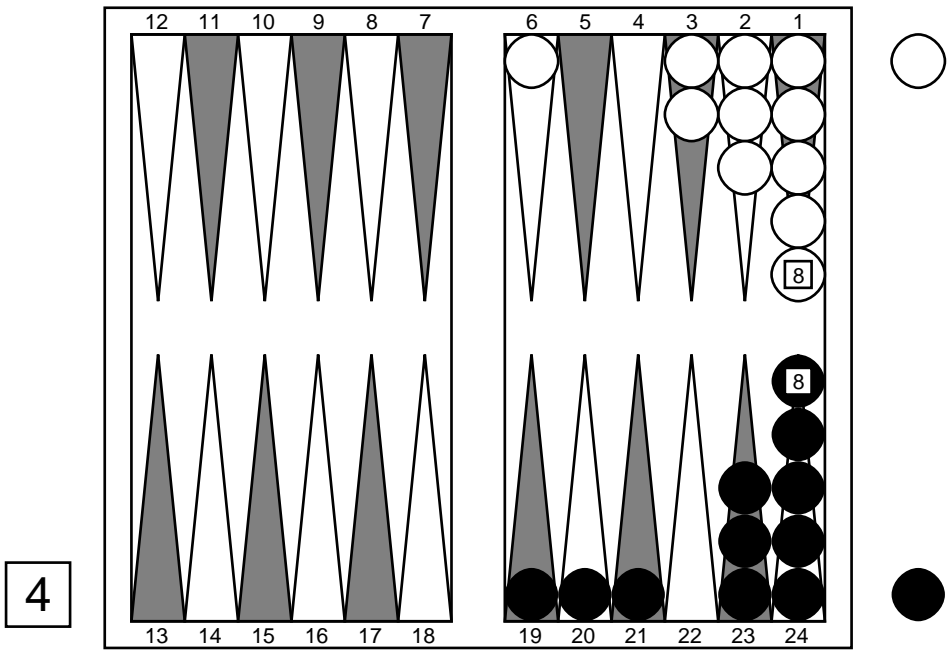
Move number 61: You to play 62



Position ID: /24EAIB/T4IAAA Match ID: UglrAAAAAAAA
 Pip counts: mikegrahamjr 26, You 37
 ● 62: 11/5 2/off

* 1. Cubeful 2-ply 11/5 2/off Eq.: -0.404
 0.298 0.000 0.000 - 0.702 0.000 0.000

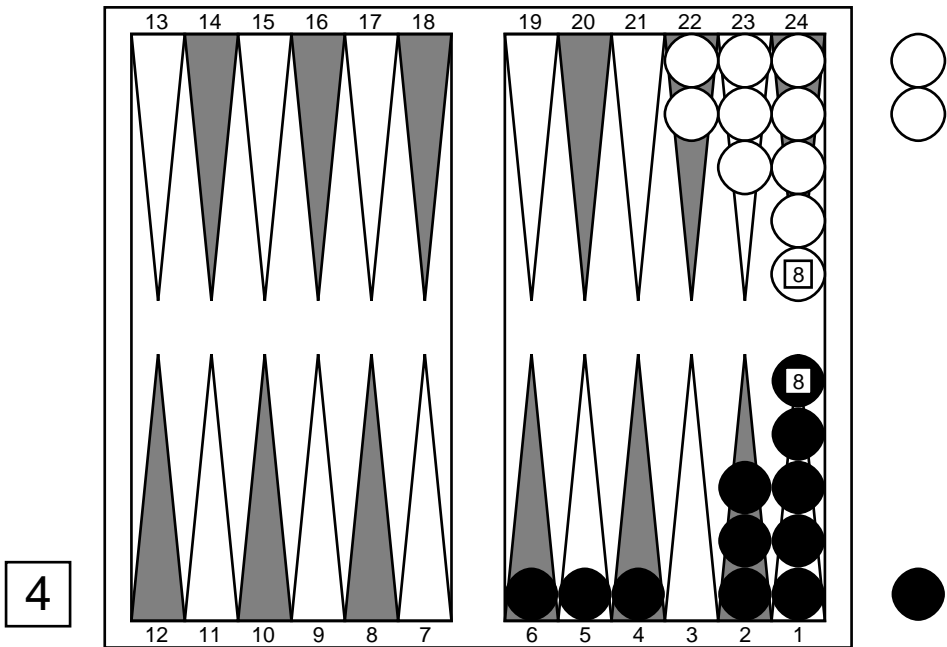
Move number 62: mikegrahamjr to play 42



Position ID: /24EAIB/pwIAAA Match ID: EgFqAAAAAAAAA
 Pip counts: mikegrahamjr 26, You 29
 ○ 42: 6/off

* 1. Cubeful 2-ply 6/off Eq.: +0.124
 0.562 0.000 0.000 - 0.438 0.000 0.000

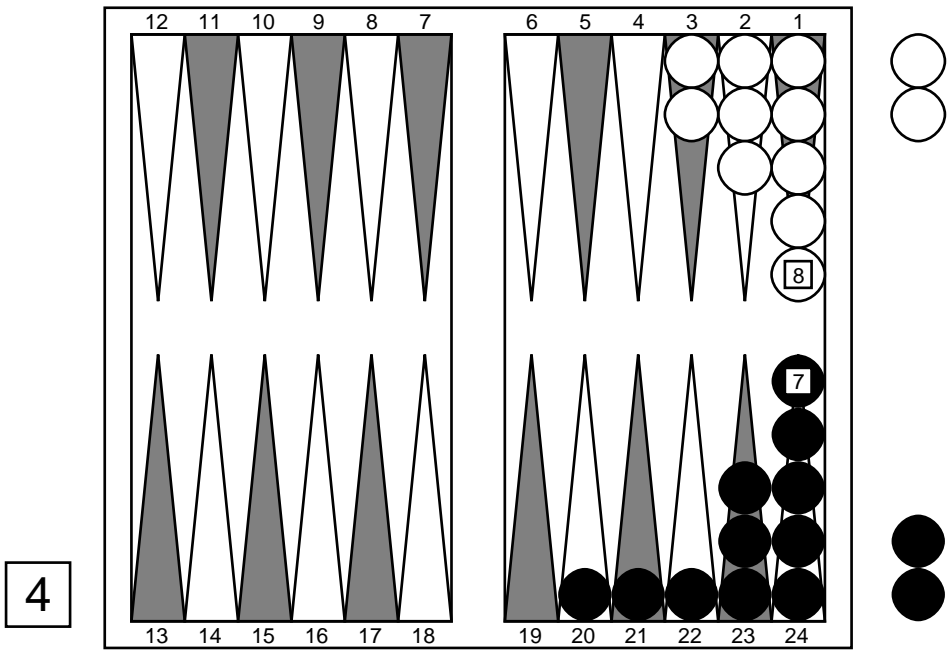
Move number 63: You to play 13



Position ID: /24AAMC/UwEAAA Match ID: UolsAAAAAAAAA
 Pip counts: mikegrahamjr 20, You 29
 ● 13: 6/3 1/off

* 1. Cubeful 2-ply 6/3 1/off Eq.: -0.400
 0.300 0.000 0.000 - 0.700 0.000 0.000

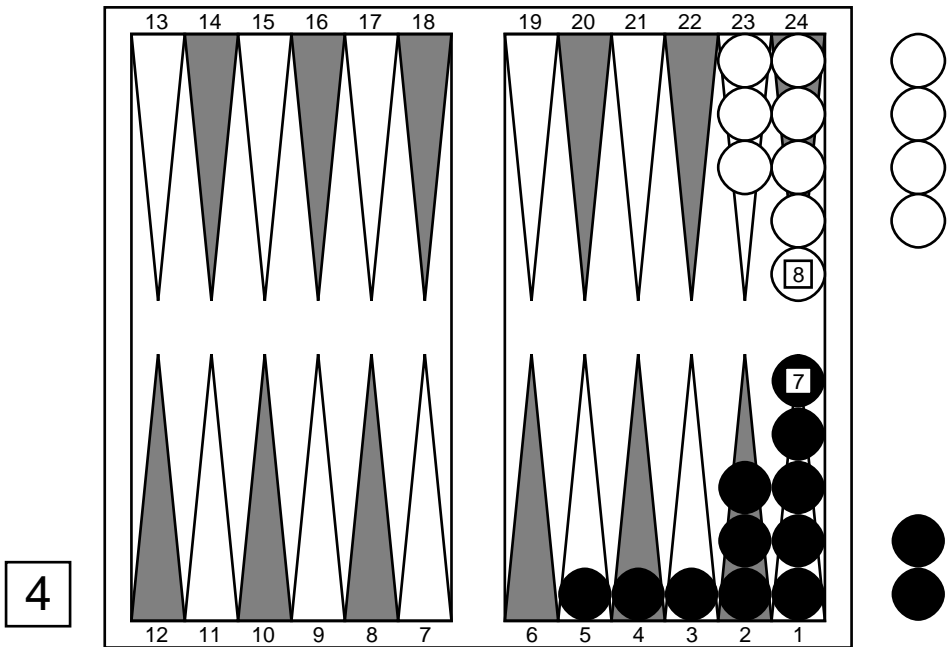
Move number 64: mikegrahamjr to play 54



Position ID: /24AAMDfVQAAAA Match ID: EoFyAAAAAAAAA
 Pip counts: mikegrahamjr 20, You 25
 ○ 54: 3/off(2)

* 1. Cubeful 0-ply 3/off(2) Eq.: +0.318
 0.659 0.000 0.000 - 0.341 0.000 0.000

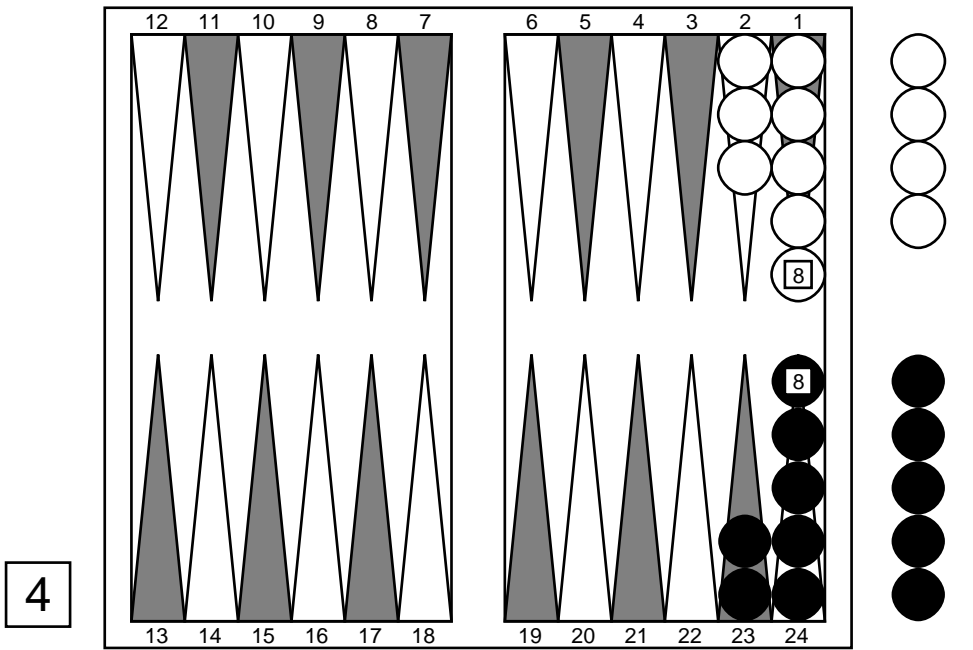
Move number 65: You to play 44



Position ID: /w4AAPB3FQAAAA Match ID: UglyAAAAAAAAA
 Pip counts: mikegrahamjr 14, You 25
 ● 44++: 5/1 4/off 3/off 2/off

* 1. Cubeful 0-ply 5/1 4/off 3/off 2/off Eq.: +0.305
 0.653 0.000 0.000 - 0.347 0.000 0.000

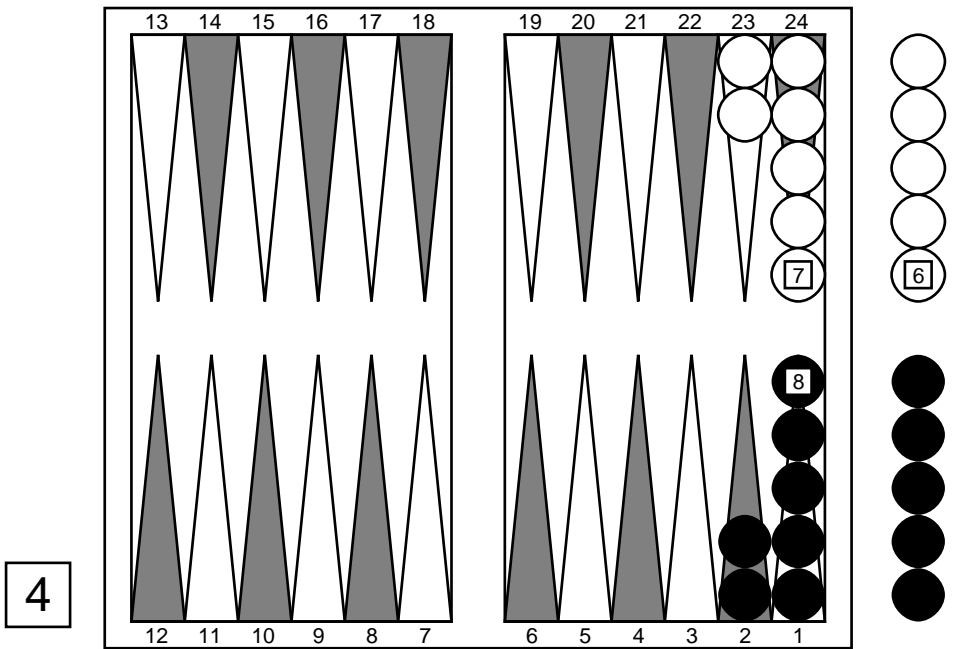
Move number 66: mikegrahamjr to play 61



Position ID: /w4AAPBVAAAAAA Match ID: EgFnAAAAAAA
 Pip counts: mikegrahamjr 14, You 12
 ○ 61: 2/off 1/off

- | | | | | | | | |
|----|---------|---------|-------|---------|-------|--------|------------------|
| 1. | Cubeful | 2-ply | 2/1 | 2/off | Eq.: | -0.435 | |
| | 0.283 | 0.000 | 0.000 | - 0.717 | 0.000 | 0.000 | |
| * | ?? | Cubeful | 2-ply | 2/off | 1/off | Eq.: | -0.435 (+0.000) |
| | 0.283 | 0.000 | 0.000 | - 0.717 | 0.000 | 0.000 | |

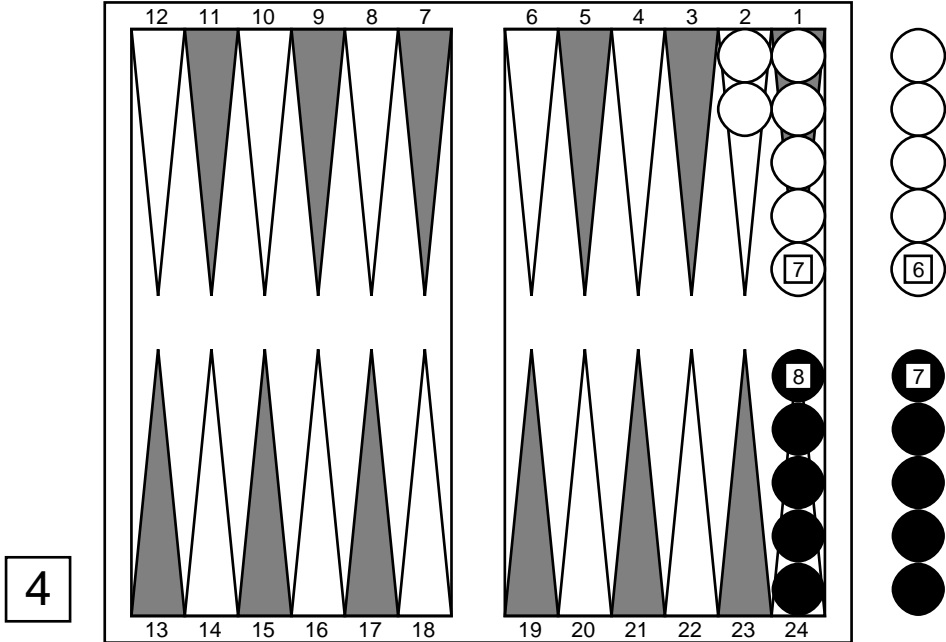
Move number 67: You to play 43



Position ID: fwMAAPwbAAAAAA Match ID: UgluAAAAAAA
 Pip counts: mikegrahamjr 11, You 12
 ● 43: 2/off(2)

* 1. Cubeful 0-ply 2/off(2) Eq.: +0.342
 0.671 0.000 0.000 - 0.329 0.000 0.000

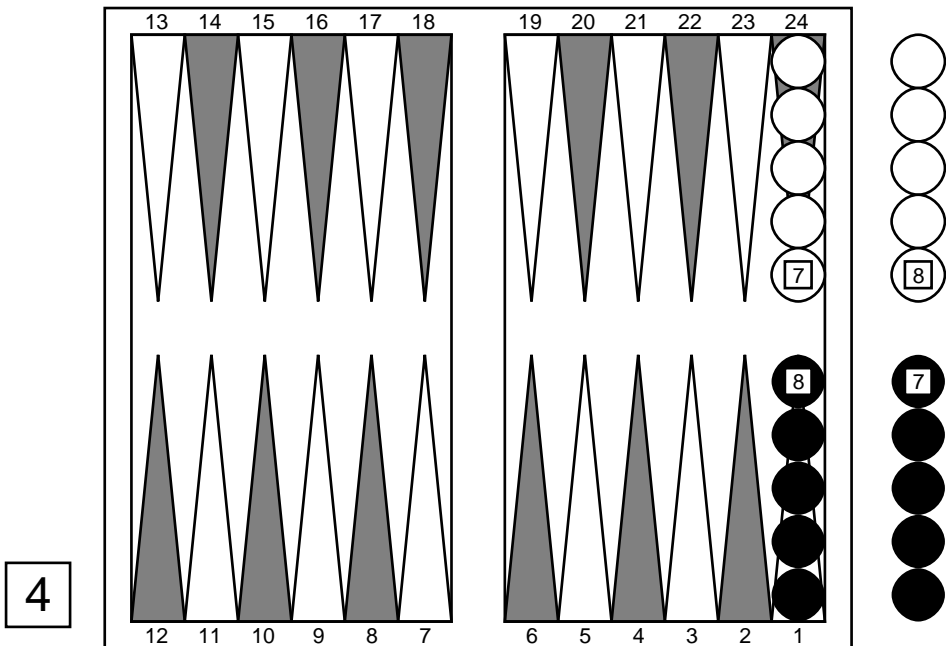
Move number 68: mikegrahamjr to play 34



Position ID: fwMAAPwDAAAAAA Match ID: EoFxAAAAAAA
 Pip counts: mikegrahamjr 11, You 8
 ○ 34: 2/off(2)

* 1. Cubeful 0-ply 2/off(2) Eq.: -0.491
 0.255 0.000 0.000 - 0.745 0.000 0.000

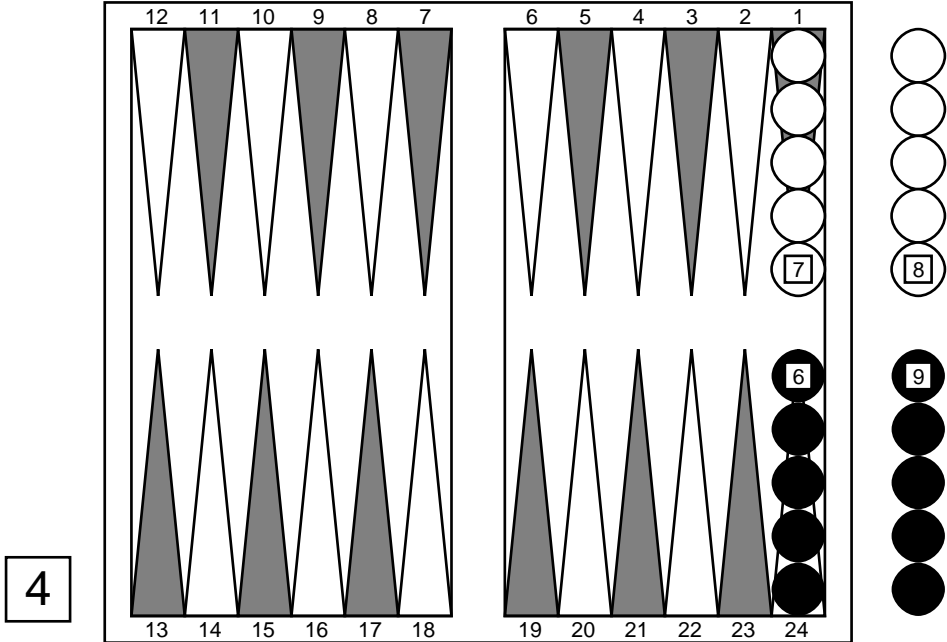
Move number 69: You to play 63



Position ID: fwAAAP8AAAAAA Match ID: UglvAAAAAAA
 Pip counts: mikegrahamjr 7, You 8
 ● 63: 1/off(2)

* 1. Cubeful 0-ply 1/off(2) Eq.: +0.398
 0.699 0.000 0.000 - 0.301 0.000 0.000

Move number 70: mikegrahamjr to play 41

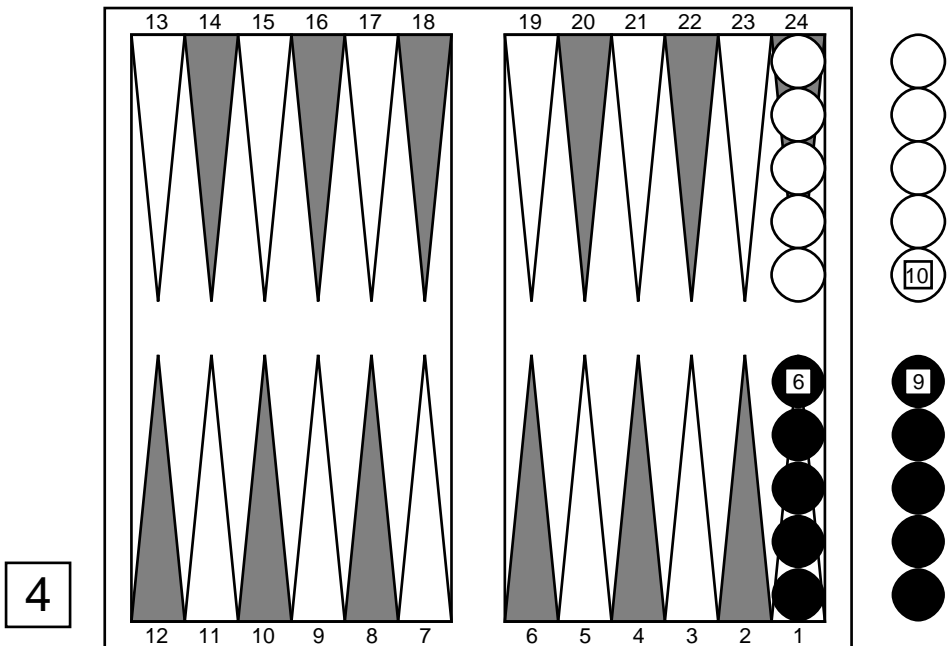


4

Position ID: fwAAAD8AAAAAAA Match ID: EgFmAAAAAAA
 Pip counts: mikegrahamjr 7, You 6
 ○ 41: 1/off(2)

* 1. Cubeful 0-ply 1/off(2) Eq.: -0.576
 0.212 0.000 0.000 - 0.788 0.000 0.000

Move number 71: You to play 65

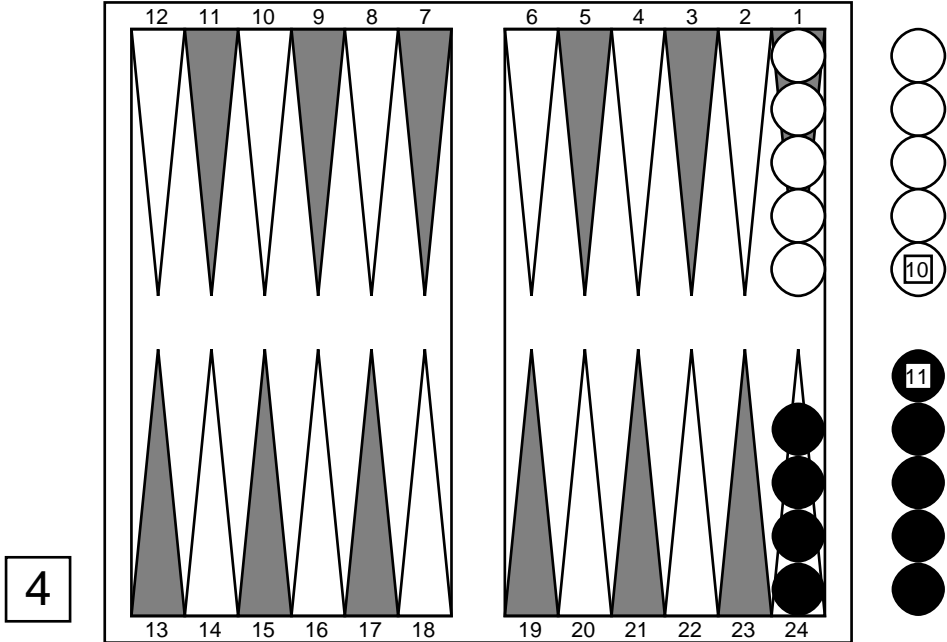


4

Position ID: HwAAwA8AAAAAAA Match ID: Ug13AAAAAAA
 Pip counts: mikegrahamjr 5, You 6
 ● 65: 1/off(2)

* 1. Cubeful 0-ply 1/off(2) Eq.: +0.491
 0.745 0.000 0.000 - 0.255 0.000 0.000

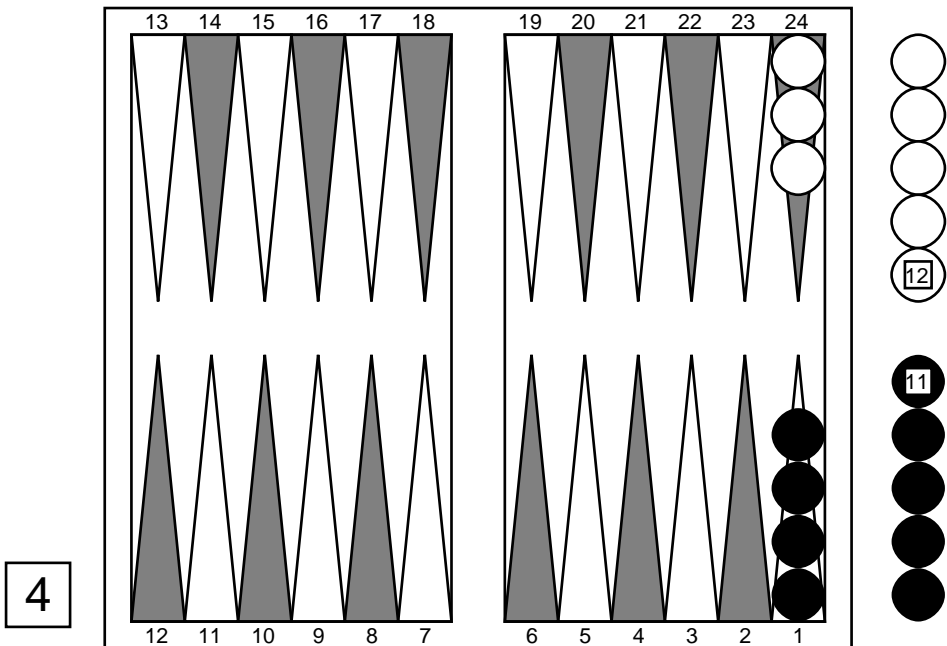
Move number 72: mikegrahamjr to play 54



Position ID: HwAAwAMAAAAAAA Match ID: EoFyAAAAAAA
 Pip counts: mikegrahamjr 5, You 4
 ○ 54: 1/off(2)

* 1. Cubeful 0-ply 1/off(2) Eq.: -0.722
 0.139 0.000 0.000 - 0.861 0.000 0.000

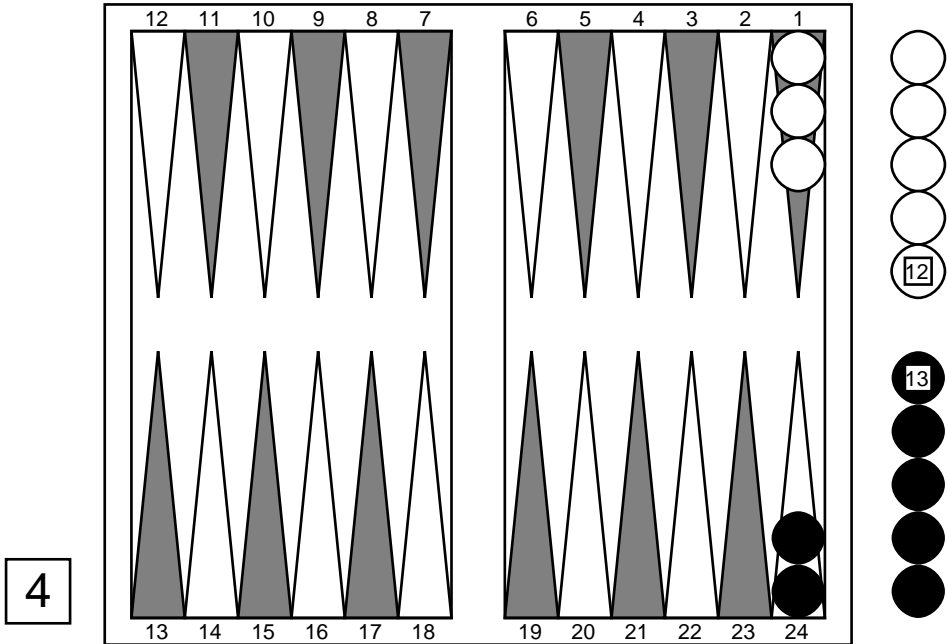
Move number 73: You to play 16



Position ID: BwAA8AAAAAAA Match ID: Uo14AAAAAAA
 Pip counts: mikegrahamjr 3, You 4
 ● 16: 1/off(2)

* 1. Cubeful 0-ply 1/off(2) Eq.: +0.667
 0.833 0.000 0.000 - 0.167 0.000 0.000

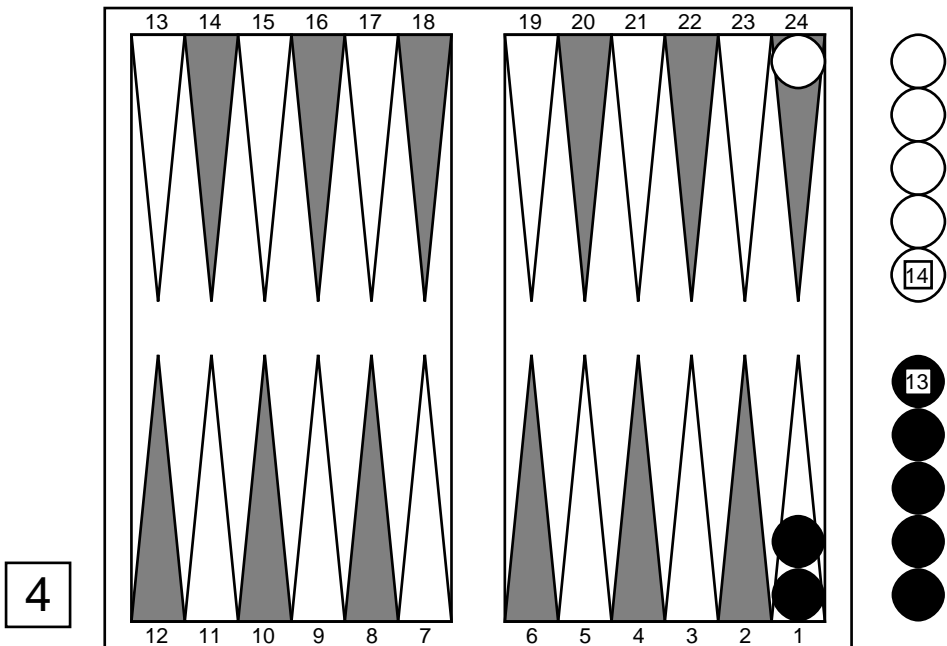
Move number 74: mikegrahamjr to play 36



Position ID: BwAAMAAAAAAAAA Match ID: EoF5AAAAAAAA
 Pip counts: mikegrahamjr 3, You 2
 ○ 36-: 1/off(2)

* 1. Cubeful 0-ply 1/off(2) Eq.: -1.000
 0.000 0.000 0.000 - 1.000 0.000 0.000

Move number 75: You to play 22



Position ID: AQAADAAAAAAAAA Match ID: UglpAAAAAAAA
 Pip counts: mikegrahamjr 1, You 2
 ● 22: 1/off(2)

* 1. Cubeful 0-ply 1/off(2) Eq.: +1.000
1.000 0.000 0.000 - 0.000 0.000 0.000